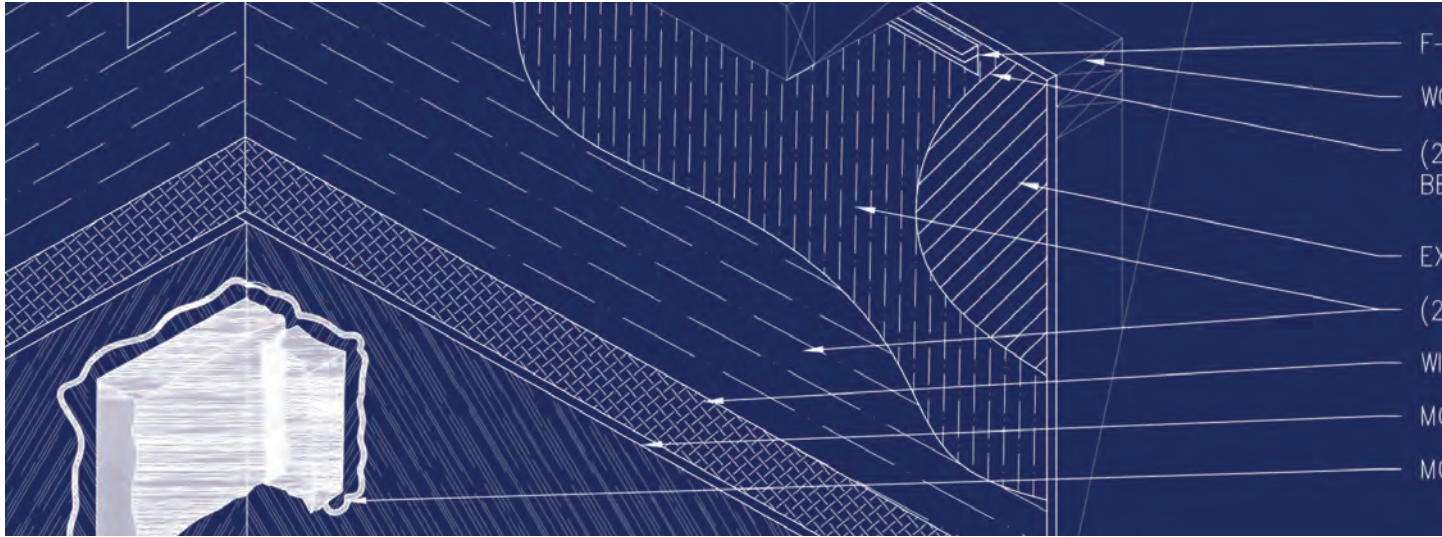


# INSTALLATION DRAWINGS



## IT'S ALL IN THE DETAILS

These construction details are provided to assist in the installation of Environmental Materials LLC product(s). These construction details will not necessarily apply to every design circumstance that you encounter. These construction details may require modification to meet your particular design requirements. Manufacturer accepts no responsibility or liability for use of these or other construction details.

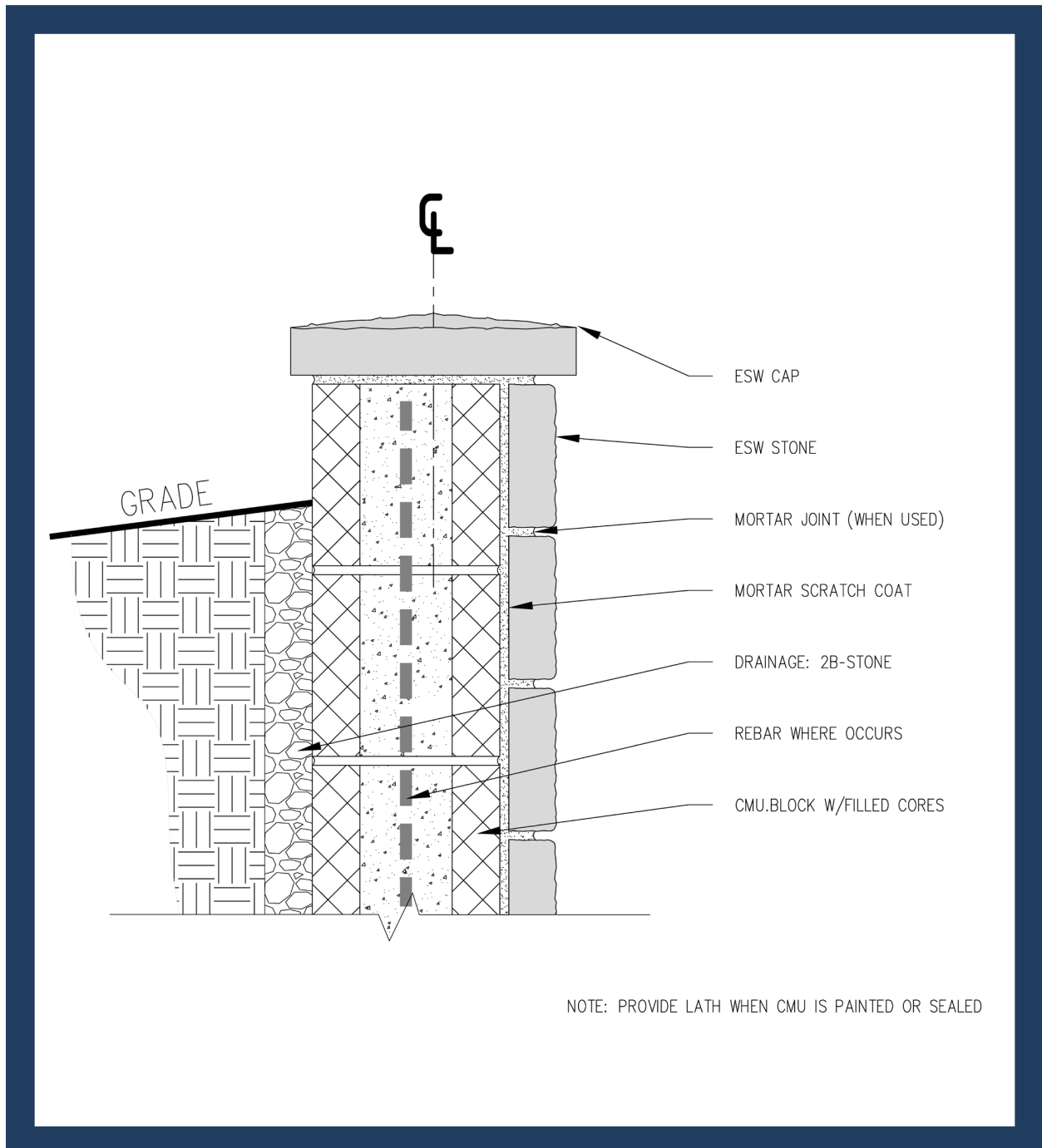
# TABLE OF CONTENTS

- Figure 1: **WALL CAP - CMU RETAINING WALL**
- Figure 2: **WALL-SECTION INSIDE CORNER WITH STUCCO**
- Figure 3: **TYPICAL WOOD OR METAL STUD WALL**
- Figure 4: **STONE BELOW CLADDING**
- Figure 5: **SIDE WALL FLASHING AT ROOF**
- Figure 6: **WINDOW HEAD**
- Figure 7: **WINDOW SILL WITH STONE DRIP LEDGE**
- Figure 8: **FOUNDATION WALL AT BASE**
- Figure 9: **FOUNDATION WALL AT BASE WITH (OPTIONAL) DRAINAGE MAT**
- Figure 10: **WOOD COLUMN BASE**
- Figure 11: **WALL OVER CONTINUOUS RIGID INSULATION**
- Figure 12: **WINDOW JAMB - OPTIONAL DRAINAGE MAT**
- Figure 13: **HORIZONTAL TRANSITION WITH STONE DRIP LEDGE**
- Figure 14: **TOP OF WALL WITH DRAINAGE MAT**
- Figure 15: **STONE WRAP ON ARCH OVERHANG**
- Figure 16: **CHIMNEY CAP**
- Figure 17: **CHIMNEY ROOF CRICKET**
- Figure 18: **COMMERCIAL WINDOW - JAMB WITH TRIM**
- Figure 19: **COMMERCIAL WINDOW - HEADER AND SILL**
- Figure 20: **DRYER VENT**
- Figure 21: **ISOMETRIC VIEW: DIVERTER/KICK-OUT FLASHING DETAIL**
- Figure 22: **INTERIOR OVER CEMENT BOARD**
- Figure 23: **MULTI STORY - MASONRY WALL TO FRAMED  
WALL CONTROL JOINT**
- Figure 24: **STONE WRAP UNDER STRAIGHT OVERHANG**
- Figure 25: **STONE UNDER STRAIGHT OVERHANG**
- Figure 26: **FIREPLACE TV MOUNT**
- Figure 27: **VERTICAL TRANSITION AT DISSIMILAR MATERIAL**
- Figure 28: **STONE/FOUNDATION-CONTINUE OVER FOUNDATION,  
WEEP SCREED AT GRADE**
- Figure 29: **STONE/FOUNDATION-CONTINUE OVER FOUNDATION,  
WEEP SCREED AT SILL PLATE**
- Figure 30: **WINDOW JAMB - INTEGRATED J-CHANNEL**
- Figure 31: **COMMERCIAL WINDOW JAMB WITH CORNER STONE**
- Figure 32: **COLUMN TOP WITH SUPPORT POST**



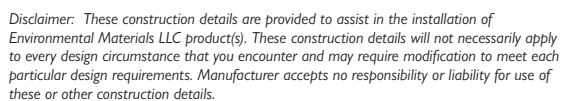
**FIGURE 1**

## WALL CAP - CMU RETAINING WALL



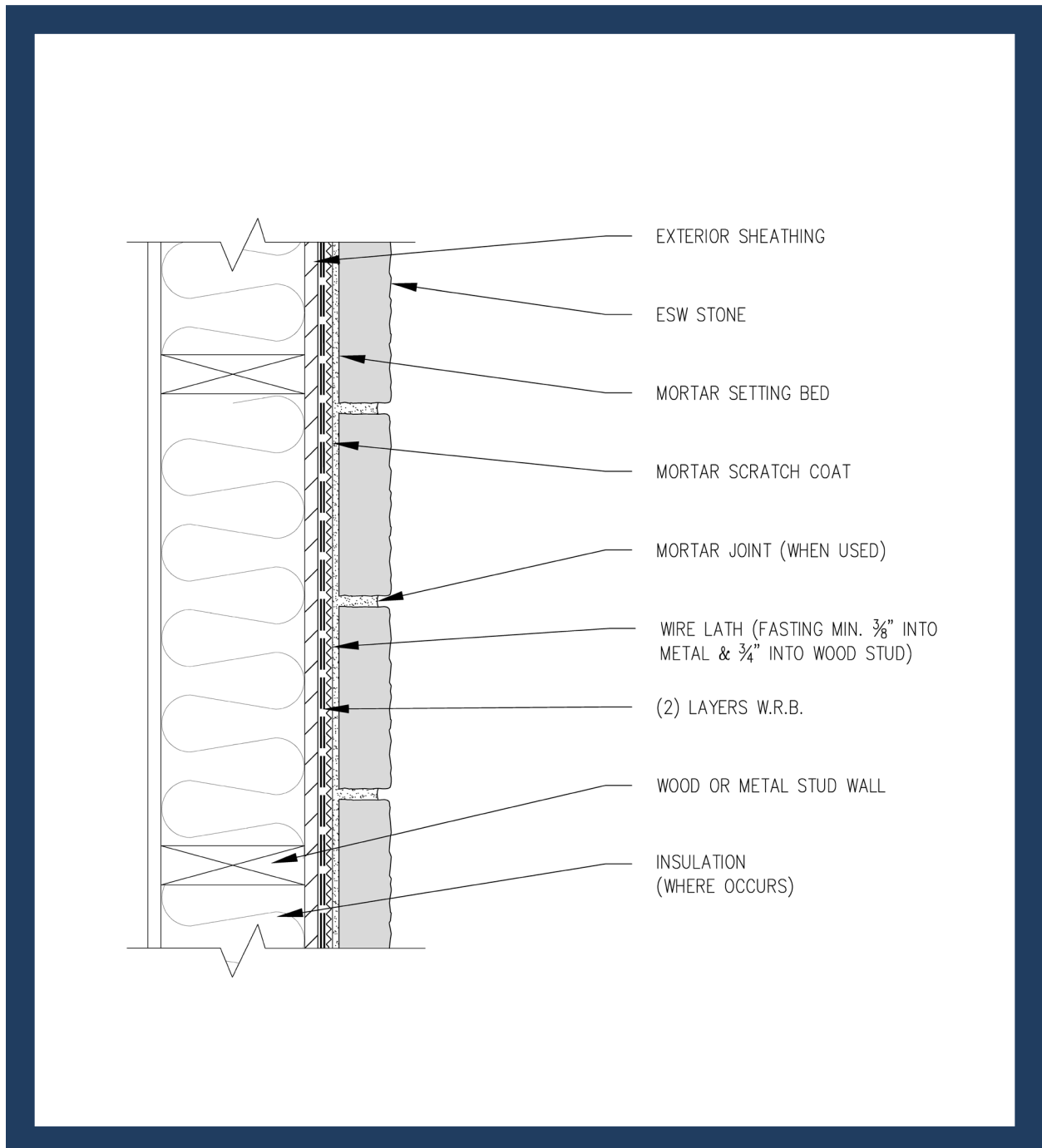
Disclaimer: These construction details are provided to assist in the installation of Environmental Materials LLC product(s). These construction details will not necessarily apply to every design circumstance that you encounter and may require modification to meet each particular design requirements. Manufacturer accepts no responsibility or liability for use of these or other construction details.

# WALL-SECTION INSIDE CORNER W/ STUCCO



**FIGURE 3**

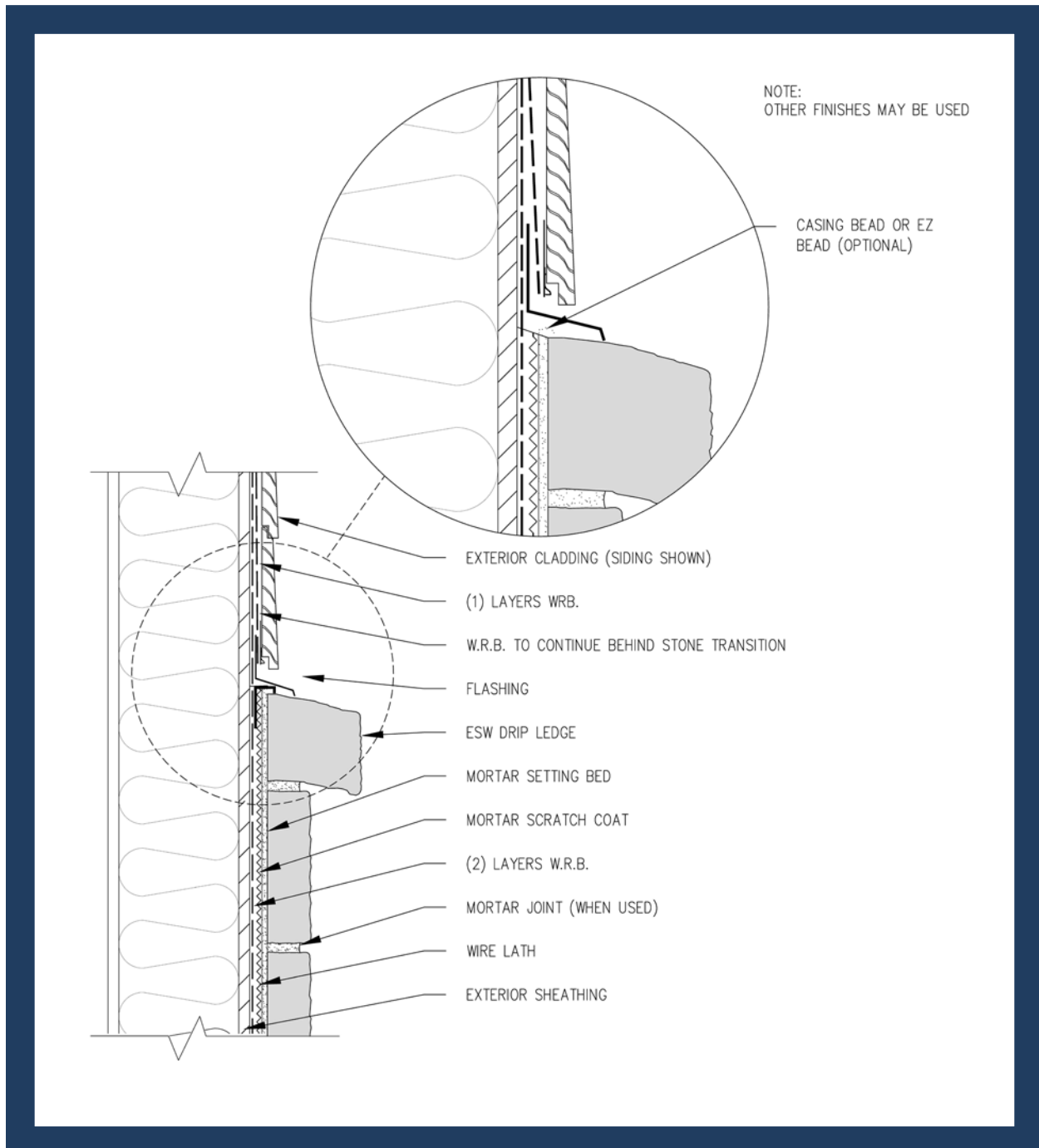
## TYP. WOOD OR METAL STUD WALL



Disclaimer: These construction details are provided to assist in the installation of Environmental Materials LLC product(s). These construction details will not necessarily apply to every design circumstance that you encounter and may require modification to meet each particular design requirements. Manufacturer accepts no responsibility or liability for use of these or other construction details.

**FIGURE 4**

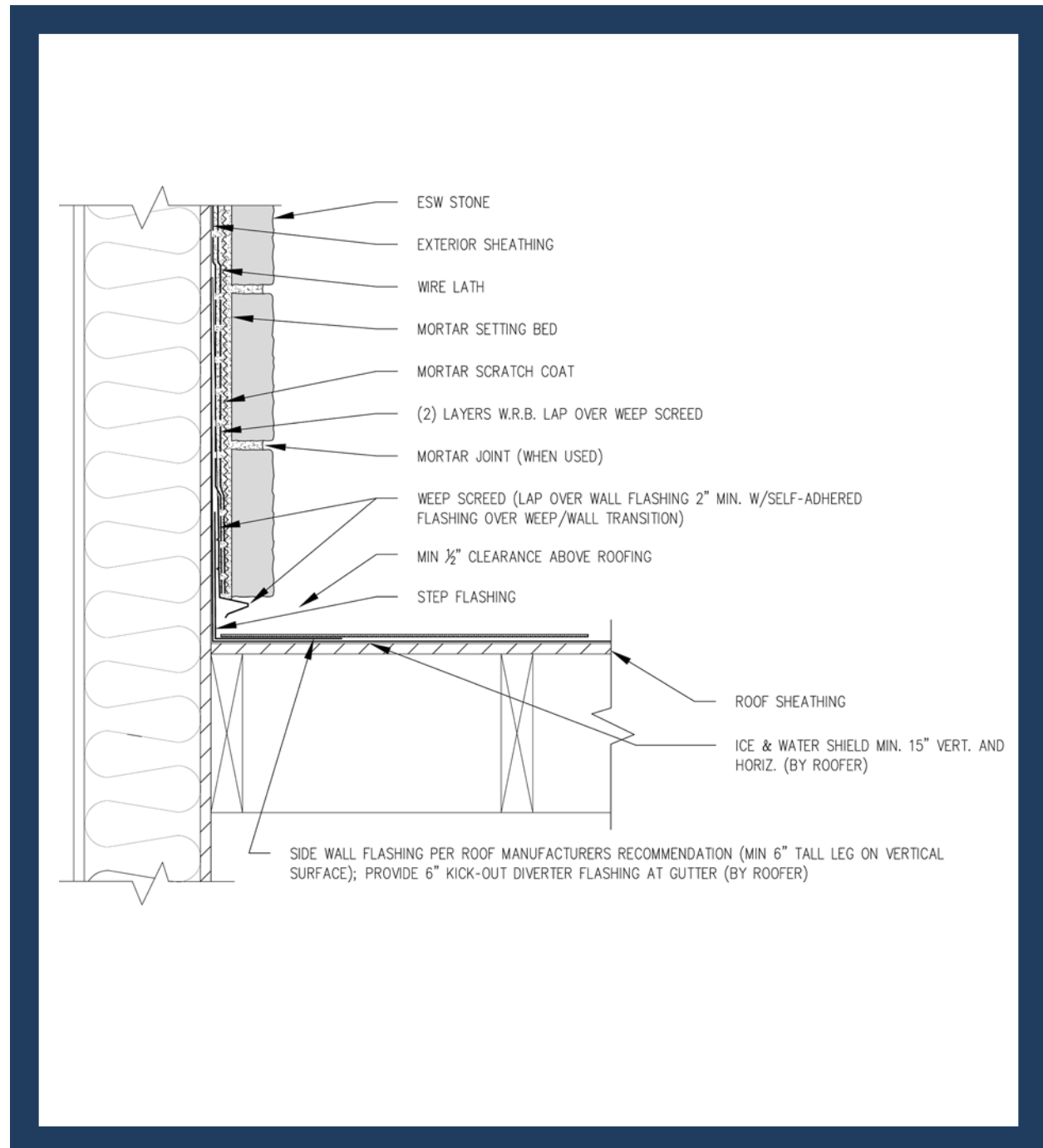
## STONE BELOW CLADDING



Disclaimer: These construction details are provided to assist in the installation of Environmental Materials LLC product(s). These construction details will not necessarily apply to every design circumstance that you encounter and may require modification to meet each particular design requirements. Manufacturer accepts no responsibility or liability for use of these or other construction details.

**FIGURE 5**

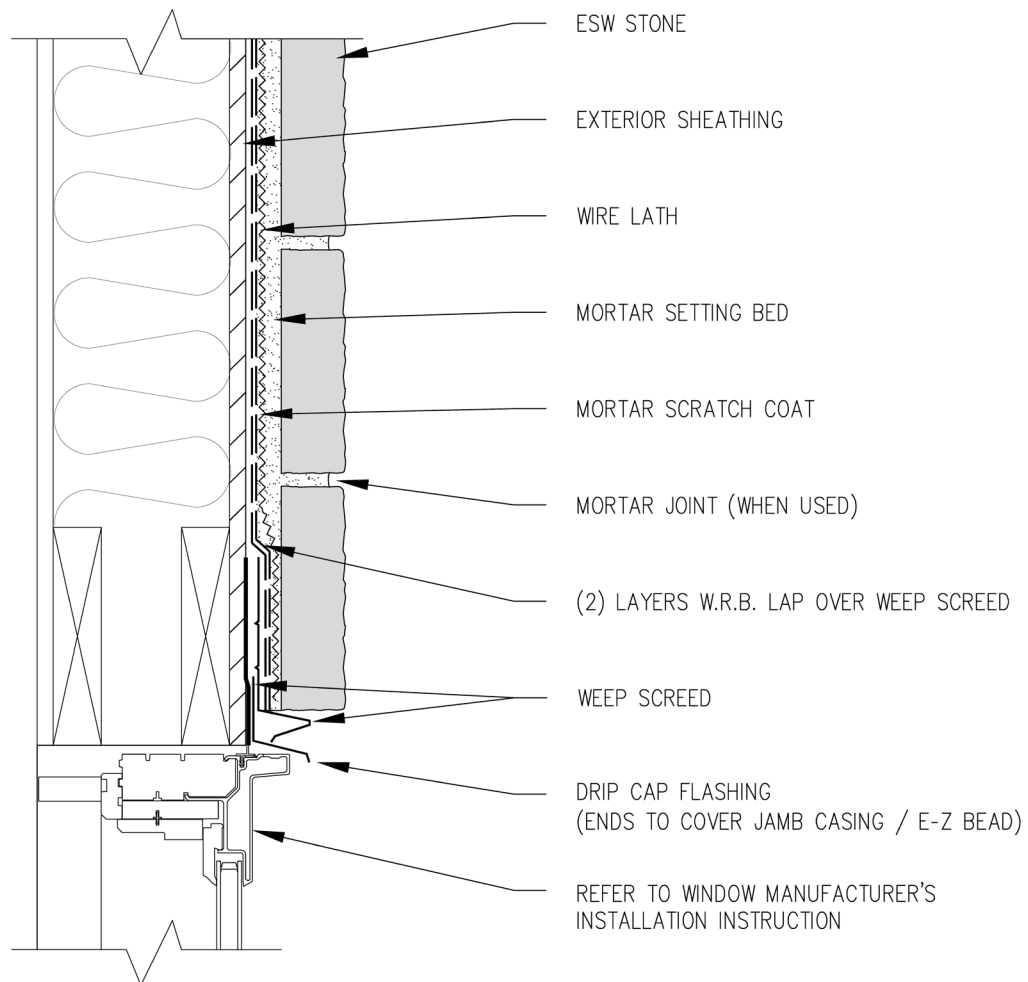
## SIDE WALL FLASHING AT ROOF



Disclaimer: These construction details are provided to assist in the installation of Environmental Materials LLC product(s). These construction details will not necessarily apply to every design circumstance that you encounter and may require modification to meet each particular design requirements. Manufacturer accepts no responsibility or liability for use of these or other construction details.

**FIGURE 6**

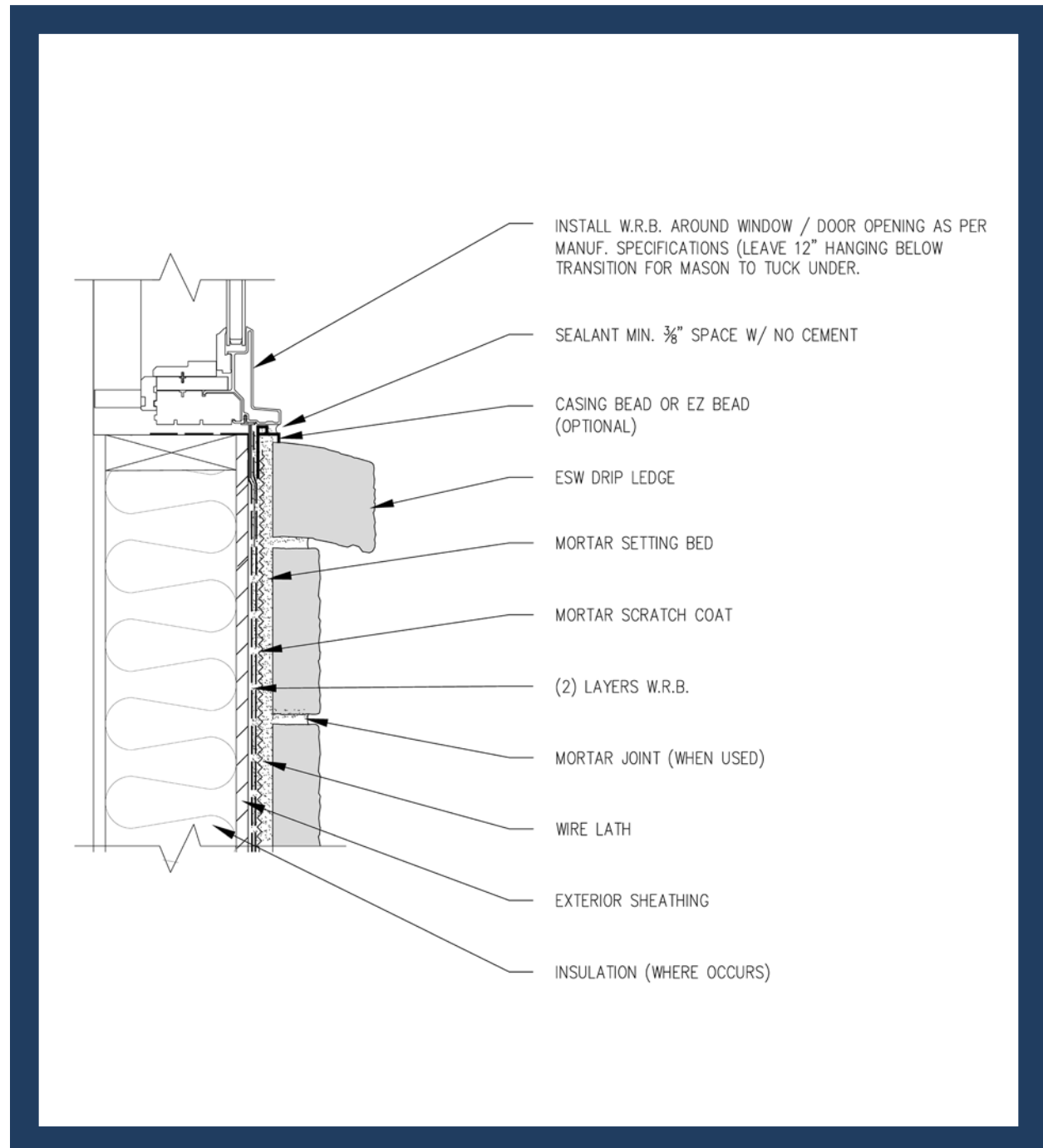
## WINDOW HEAD



Disclaimer: These construction details are provided to assist in the installation of Environmental Materials LLC product(s). These construction details will not necessarily apply to every design circumstance that you encounter and may require modification to meet each particular design requirements. Manufacturer accepts no responsibility or liability for use of these or other construction details.

**FIGURE 7**

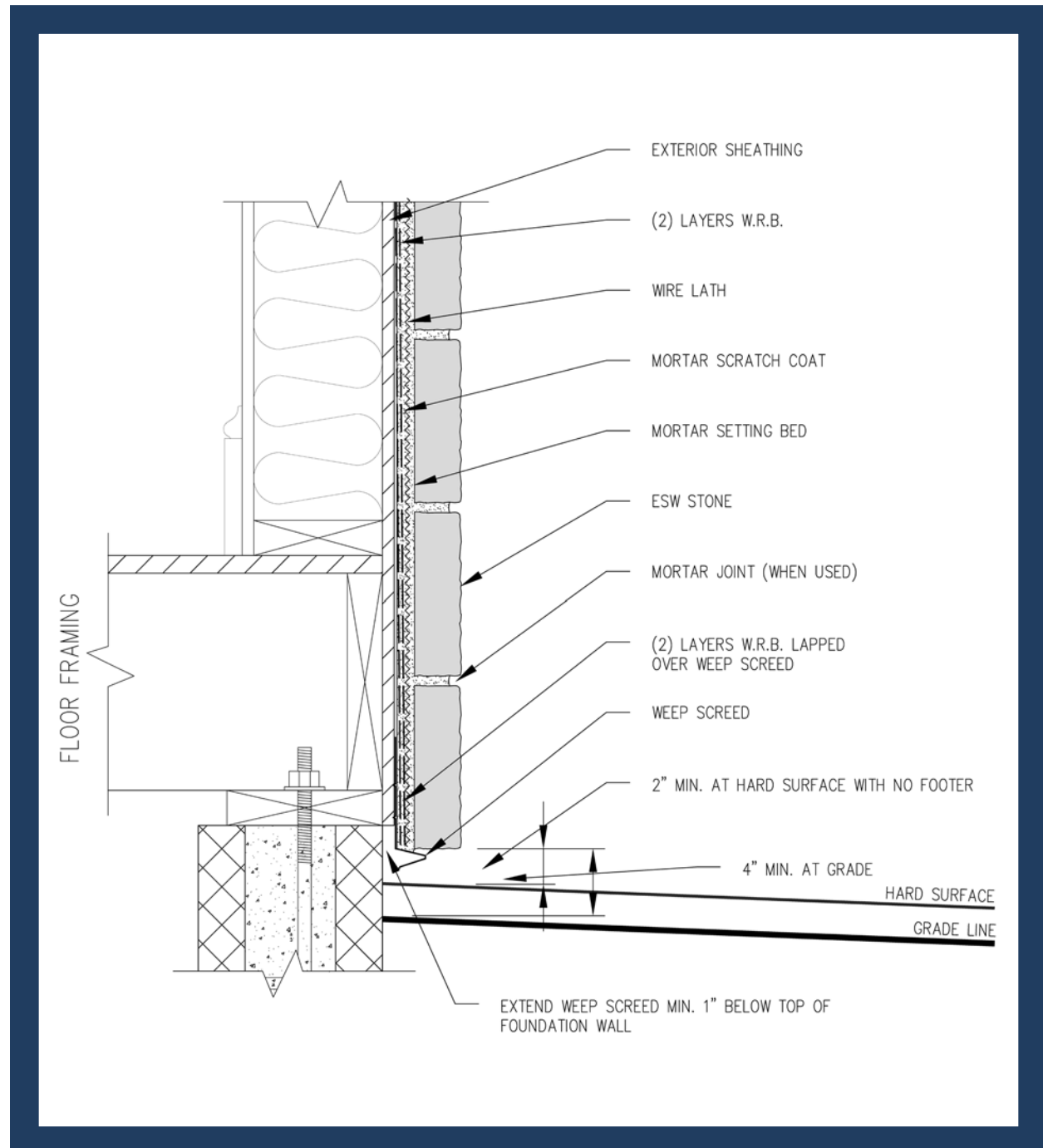
## WINDOW SILL W/ STONE DRIP LEDGE



Disclaimer: These construction details are provided to assist in the installation of Environmental Materials LLC product(s). These construction details will not necessarily apply to every design circumstance that you encounter and may require modification to meet each particular design requirements. Manufacturer accepts no responsibility or liability for use of these or other construction details.

**FIGURE 8**

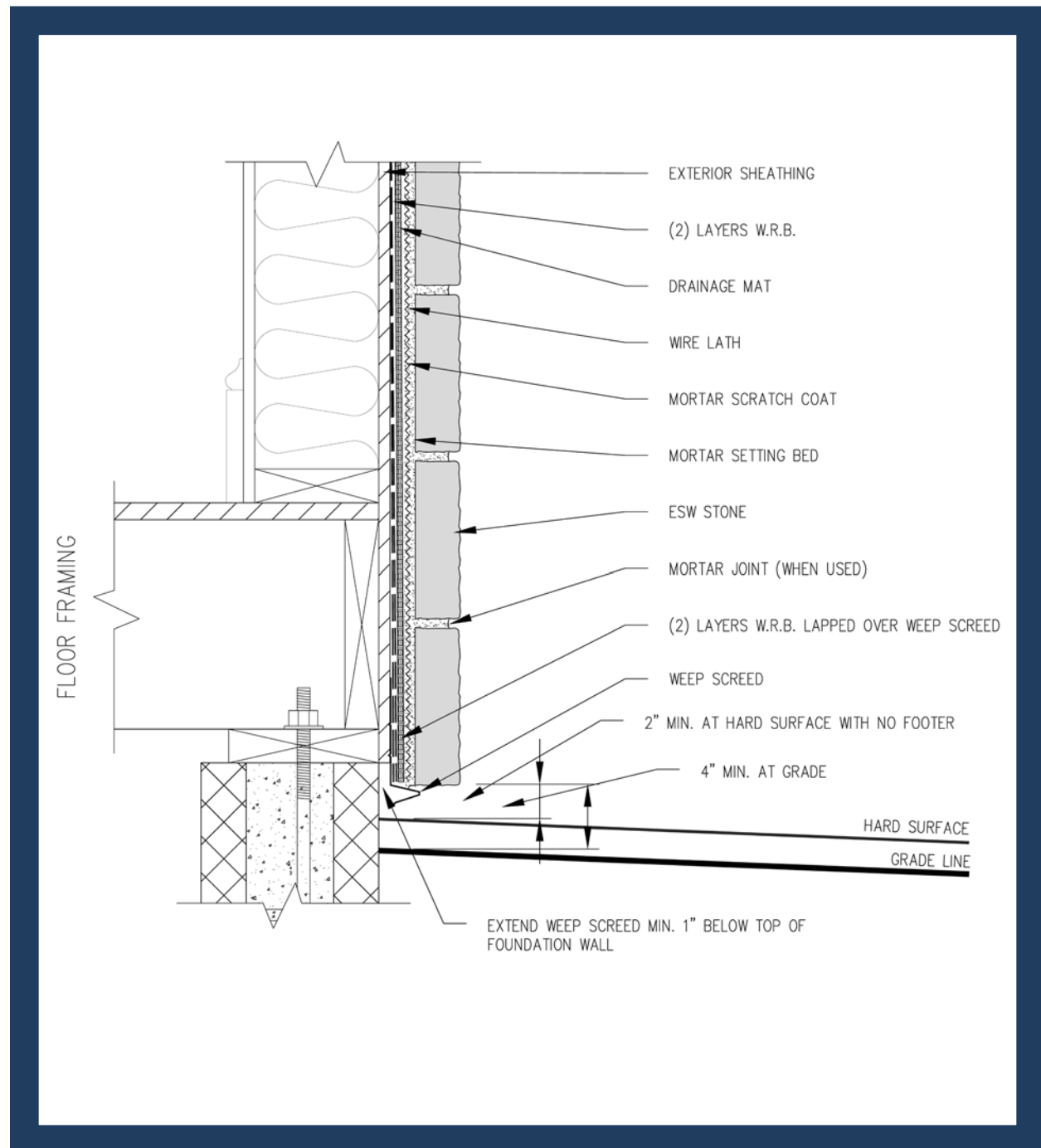
## FOUNDATION WALL @ BASE



Disclaimer: These construction details are provided to assist in the installation of Environmental Materials LLC product(s). These construction details will not necessarily apply to every design circumstance that you encounter and may require modification to meet each particular design requirements. Manufacturer accepts no responsibility or liability for use of these or other construction details.

**FIGURE 9**

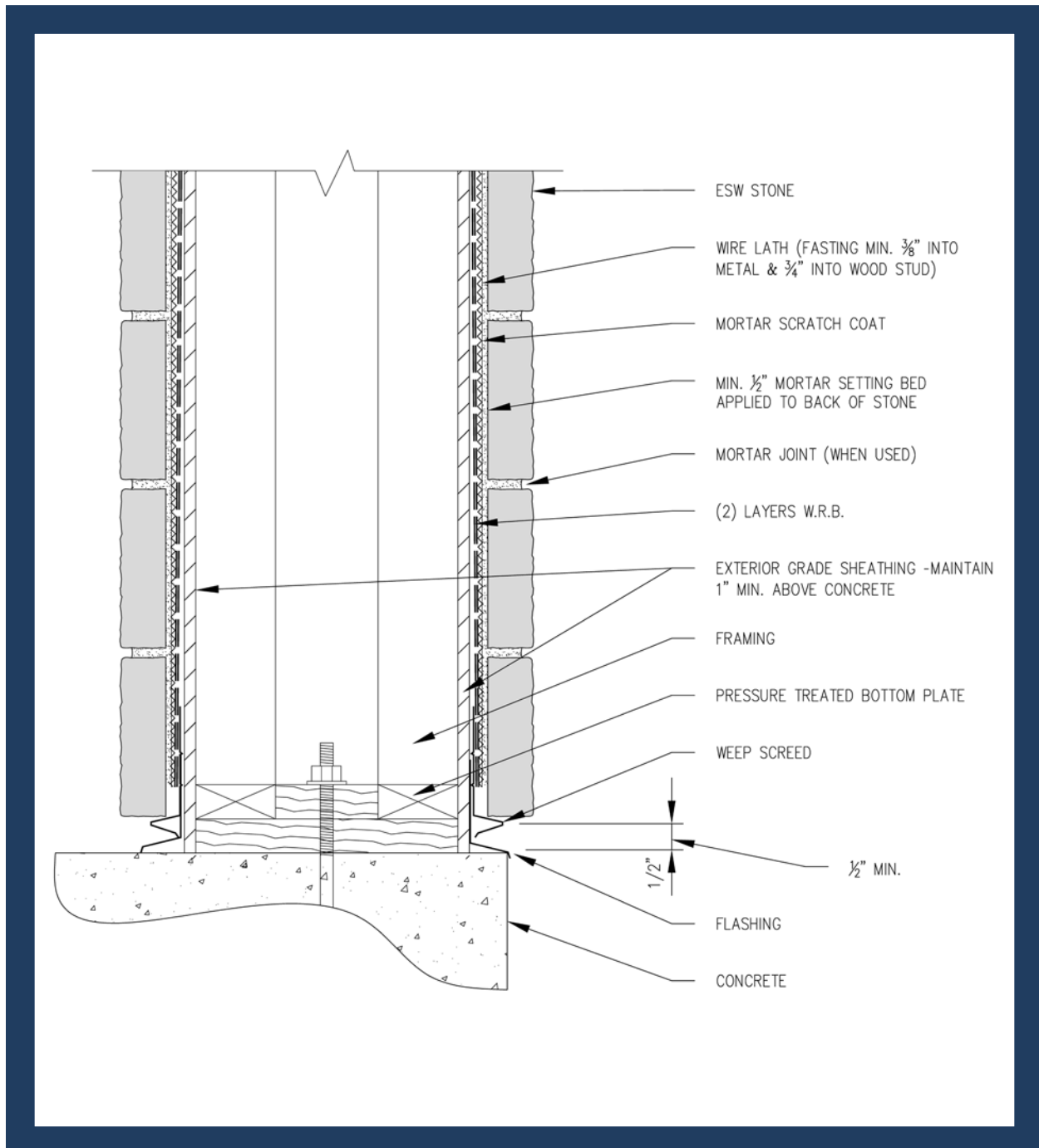
## FOUNDATION/WALL @ BASE W/ (OPTIONAL) DRAINAGE MAT



Disclaimer: These construction details are provided to assist in the installation of Environmental Materials LLC product(s). These construction details will not necessarily apply to every design circumstance that you encounter and may require modification to meet each particular design requirements. Manufacturer accepts no responsibility or liability for use of these or other construction details.

**FIGURE 10**

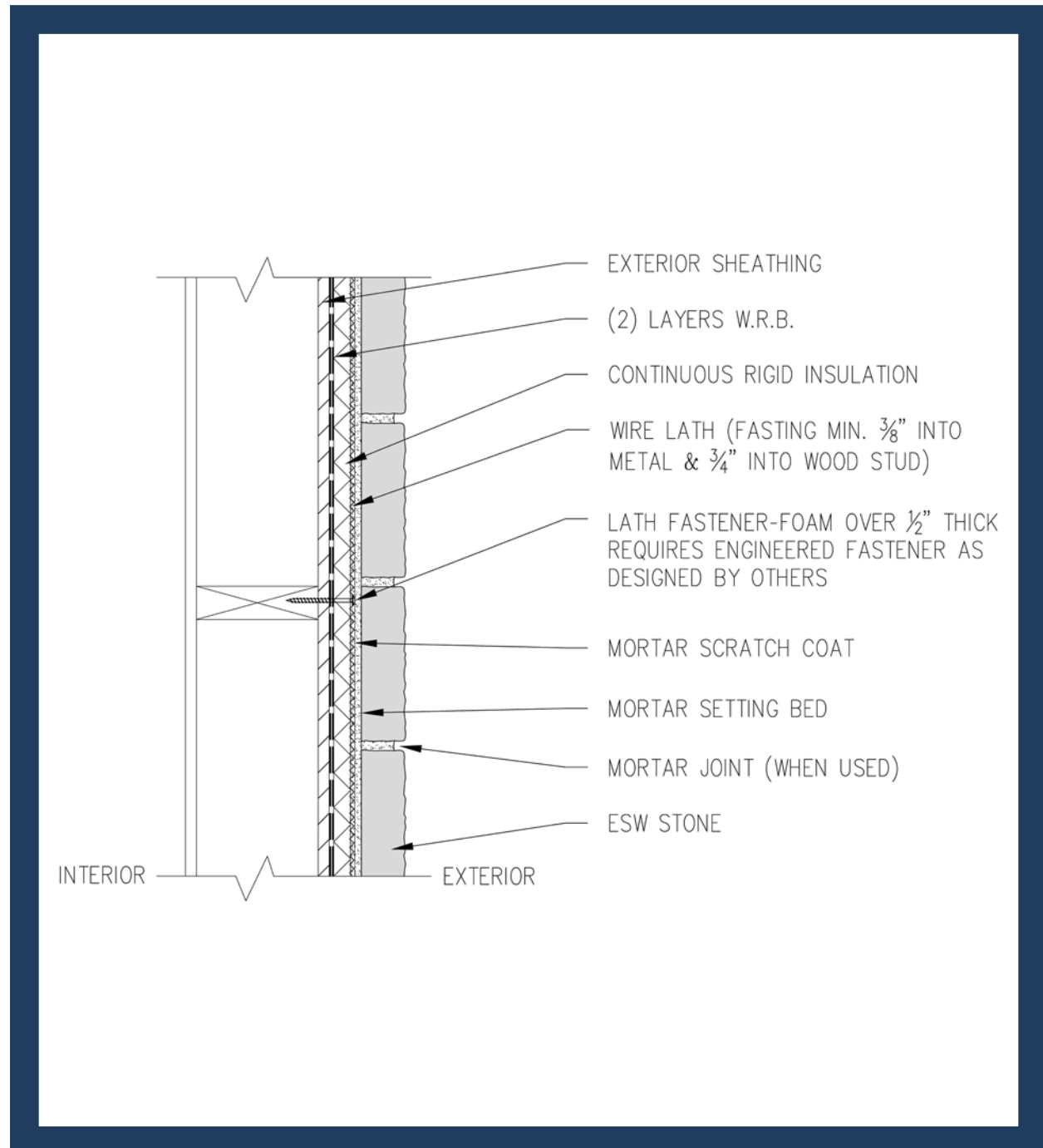
## WOOD COLUMN BASE



Disclaimer: These construction details are provided to assist in the installation of Environmental Materials LLC product(s). These construction details will not necessarily apply to every design circumstance that you encounter and may require modification to meet each particular design requirements. Manufacturer accepts no responsibility or liability for use of these or other construction details.

**FIGURE 11**

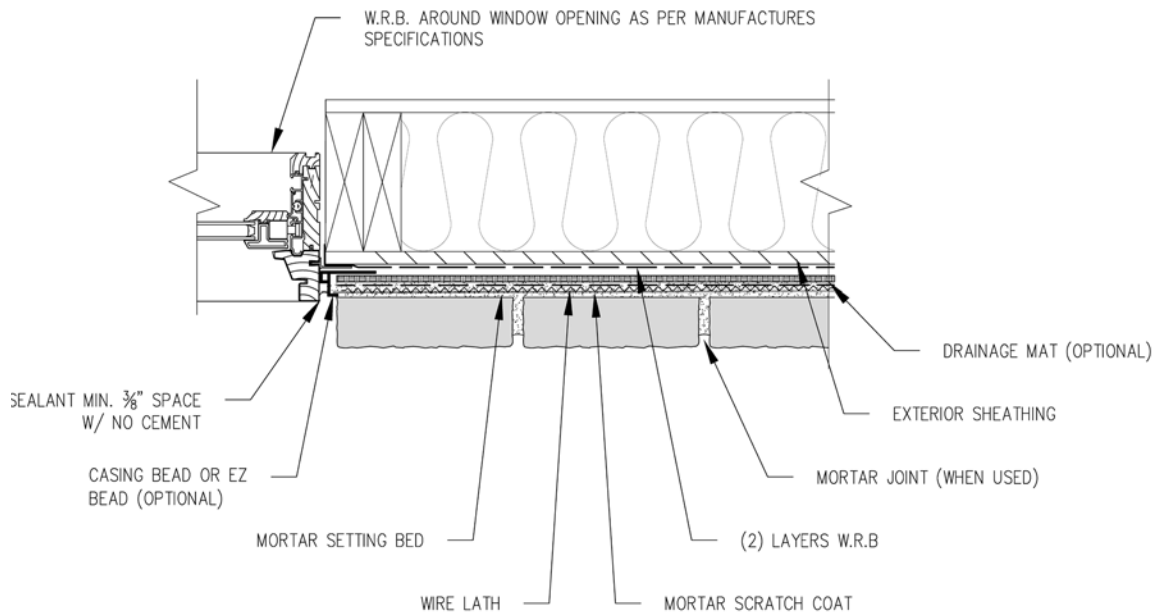
## WALL OVER CONTINUOUS RIGID INSULATION



Disclaimer: These construction details are provided to assist in the installation of Environmental Materials LLC product(s). These construction details will not necessarily apply to every design circumstance that you encounter and may require modification to meet each particular design requirements. Manufacturer accepts no responsibility or liability for use of these or other construction details.

**FIGURE 12**

## WINDOW JAMB - OPT DRAINAGE MAT

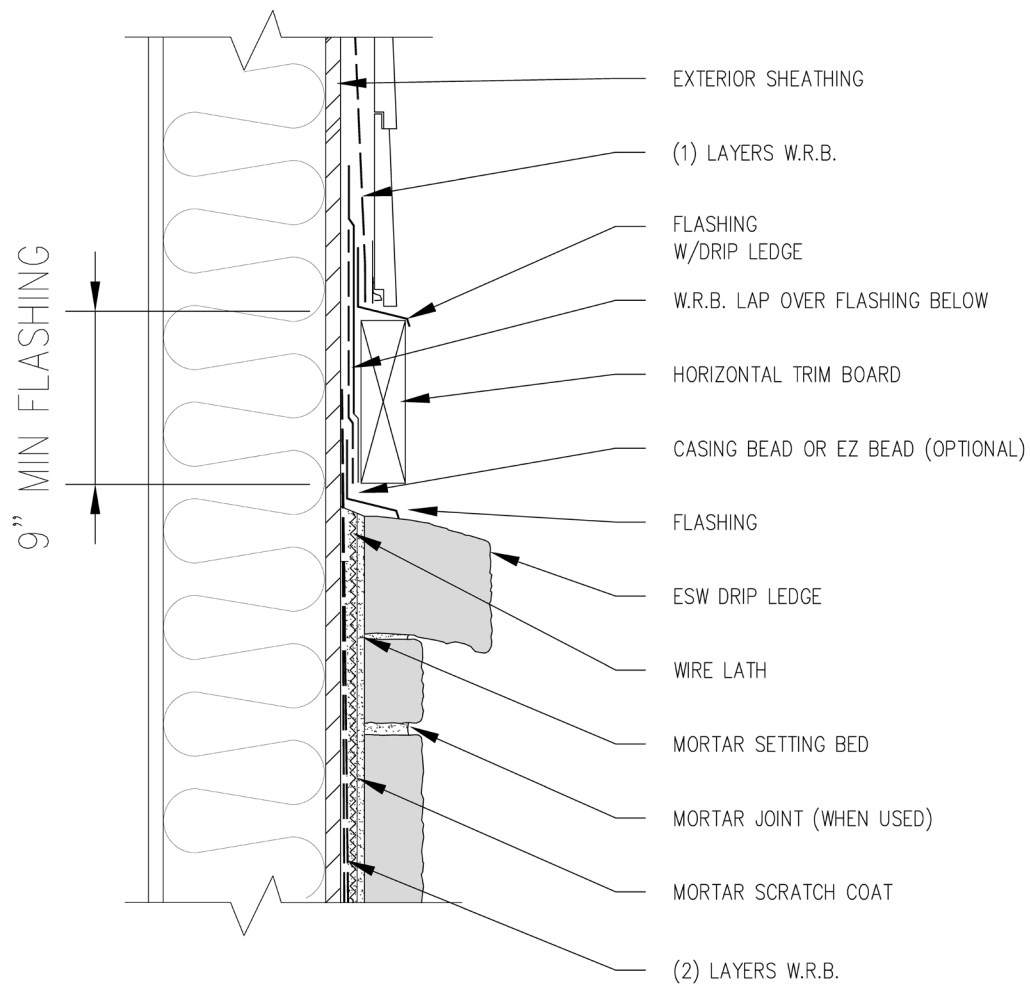


Disclaimer: These construction details are provided to assist in the installation of Environmental Materials LLC product(s). These construction details will not necessarily apply to every design circumstance that you encounter and may require modification to meet each particular design requirements. Manufacturer accepts no responsibility or liability for use of these or other construction details.

**FIGURE 13**

## HORIZONTAL TRANSITION W/ STONE DRIP LEDGE

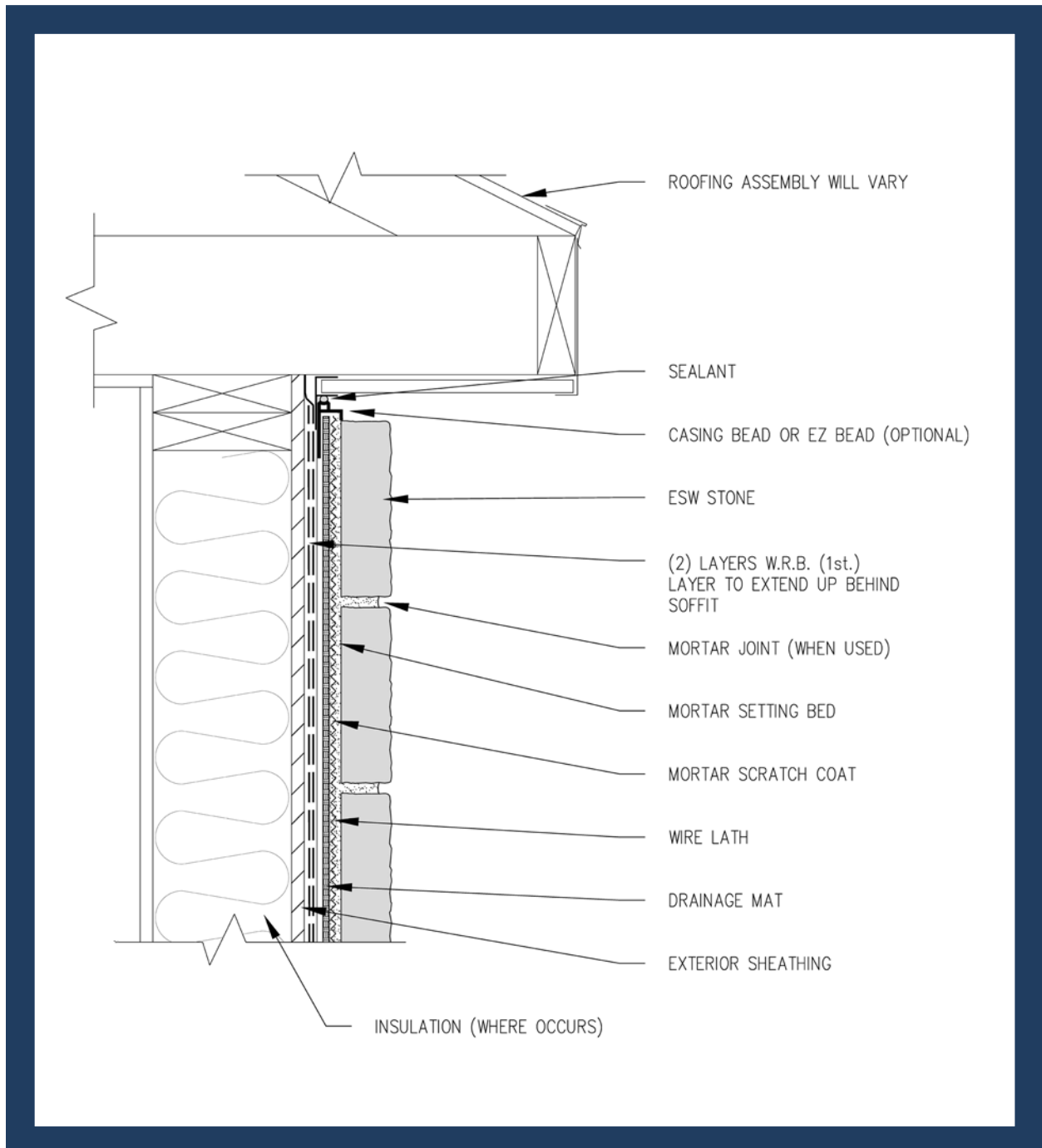
NOTE: OTHER FINISHES MAY BE USED



Disclaimer: These construction details are provided to assist in the installation of Environmental Materials LLC product(s). These construction details will not necessarily apply to every design circumstance that you encounter and may require modification to meet each particular design requirements. Manufacturer accepts no responsibility or liability for use of these or other construction details.

**FIGURE 14**

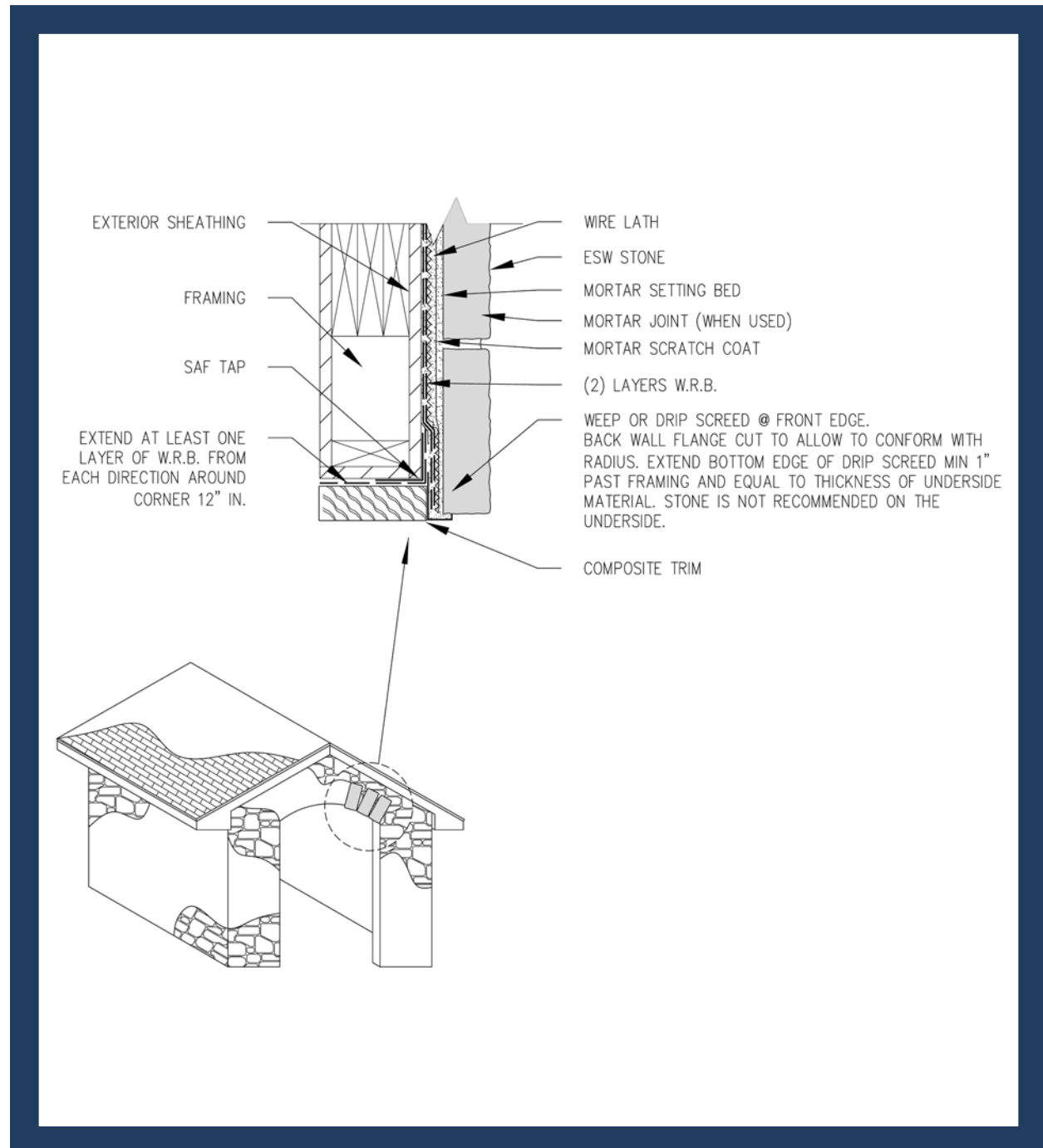
## TOP OF WALL W/ DRAINAGE MAT



Disclaimer: These construction details are provided to assist in the installation of Environmental Materials LLC product(s). These construction details will not necessarily apply to every design circumstance that you encounter and may require modification to meet each particular design requirements. Manufacturer accepts no responsibility or liability for use of these or other construction details.

**FIGURE 15**

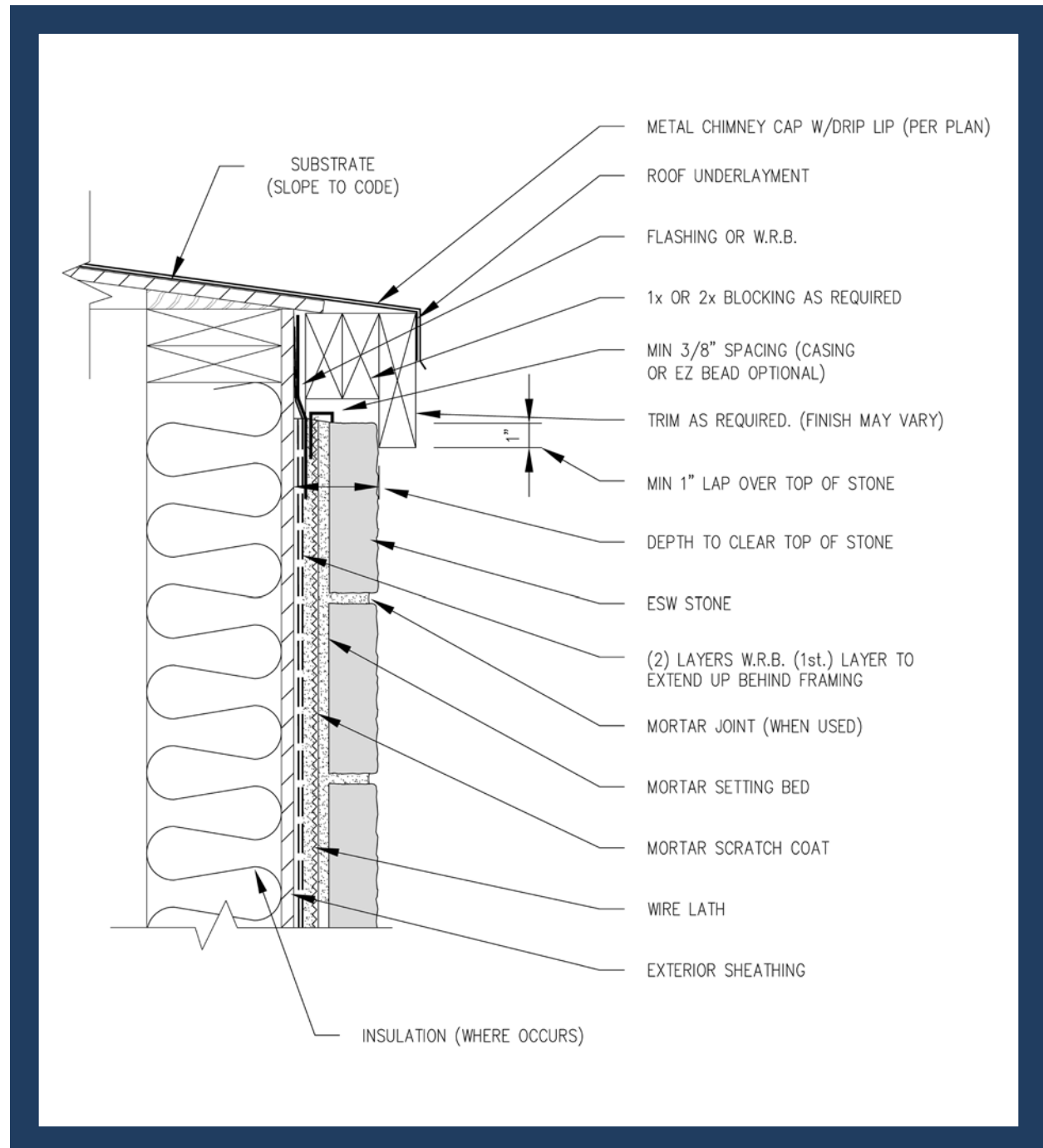
## STONE WRAP ON ARCH OVERHANG



Disclaimer: These construction details are provided to assist in the installation of Environmental Materials LLC product(s). These construction details will not necessarily apply to every design circumstance that you encounter and may require modification to meet each particular design requirements. Manufacturer accepts no responsibility or liability for use of these or other construction details.

**FIGURE 16**

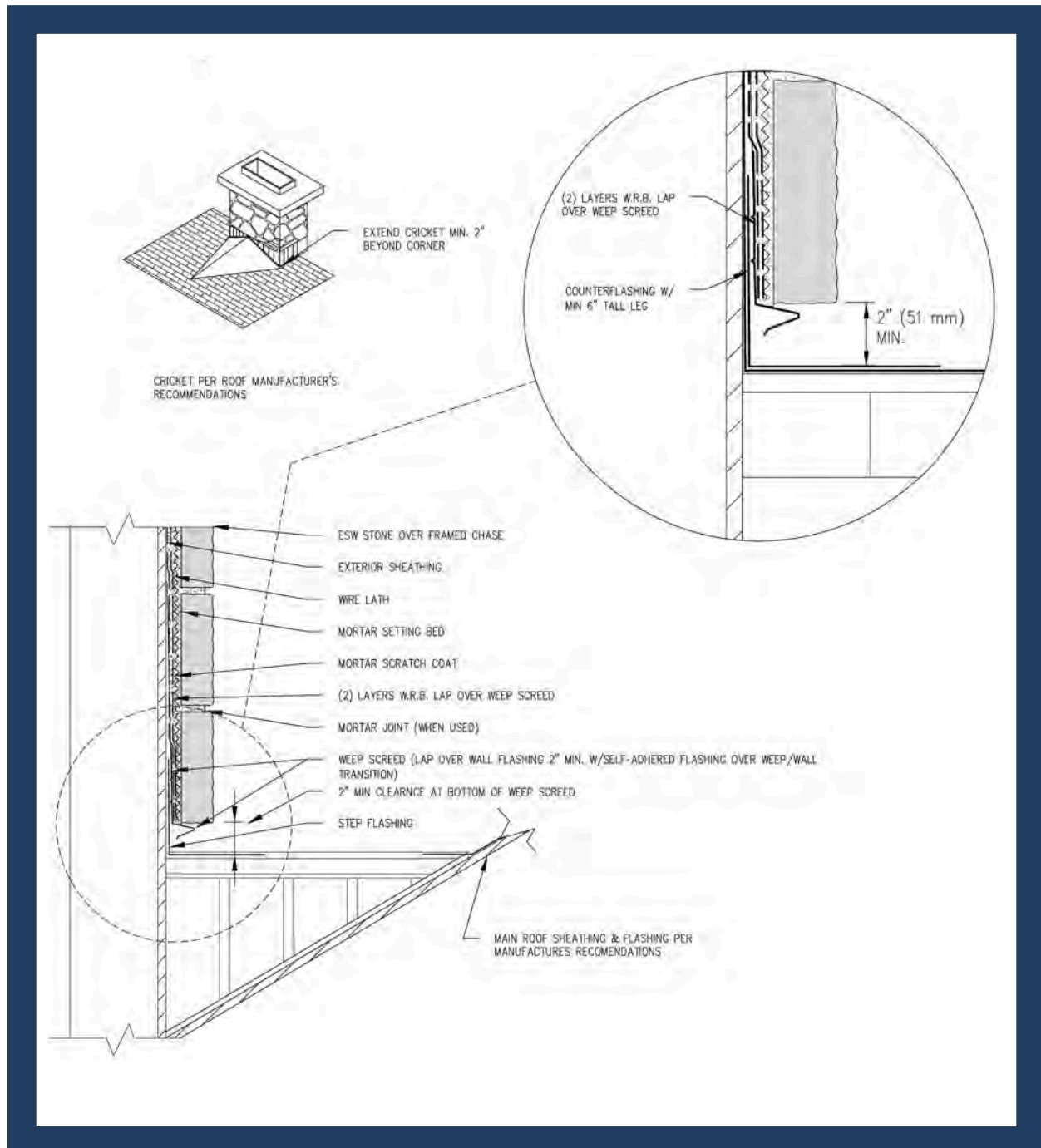
# CHIMNEY CAP



Disclaimer: These construction details are provided to assist in the installation of Environmental Materials LLC product(s). These construction details will not necessarily apply to every design circumstance that you encounter and may require modification to meet each particular design requirements. Manufacturer accepts no responsibility or liability for use of these or other construction details.

**FIGURE 17**

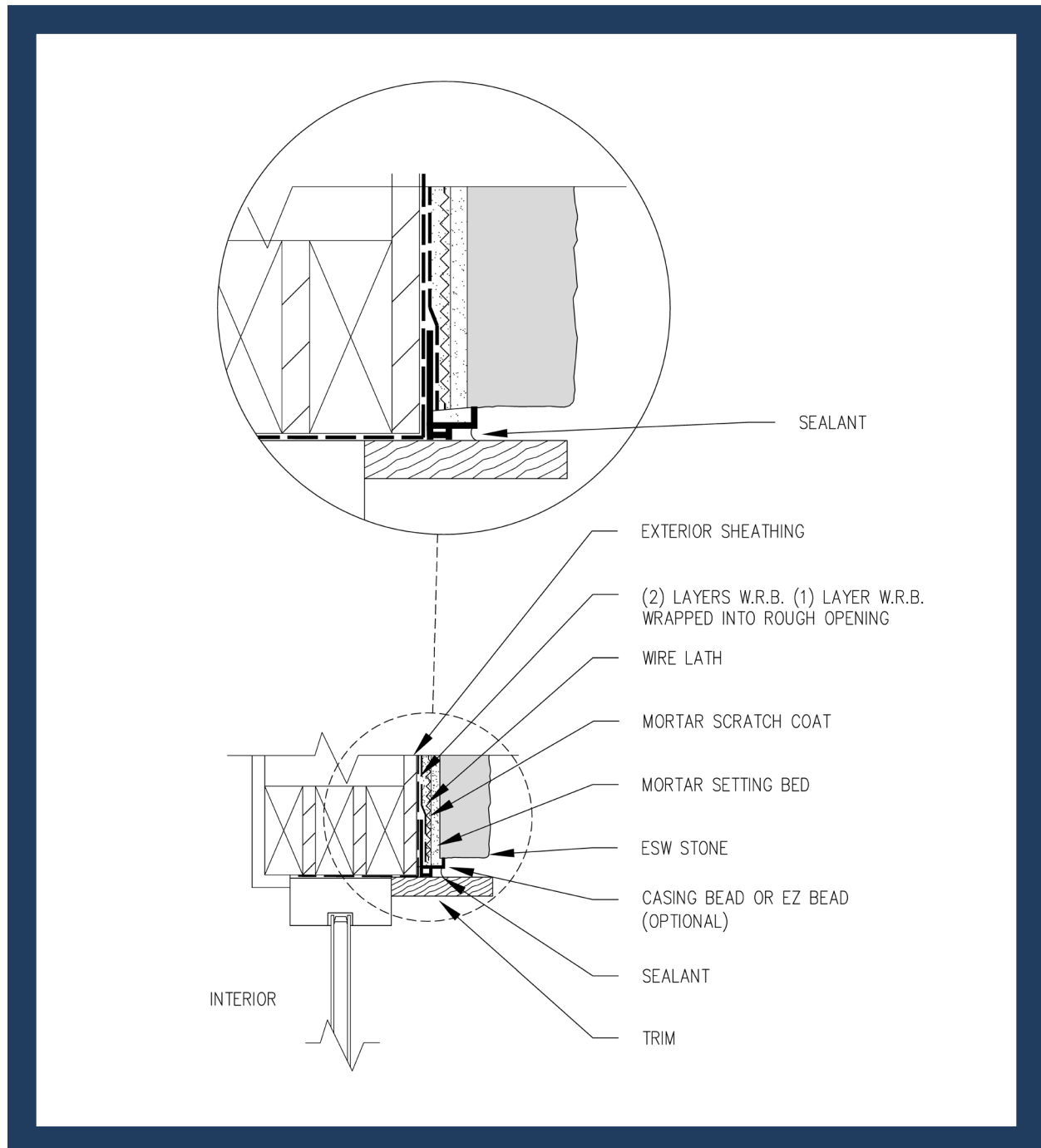
## CHIMNEY ROOF CRICKET



Disclaimer: These construction details are provided to assist in the installation of Environmental Materials LLC product(s). These construction details will not necessarily apply to every design circumstance that you encounter and may require modification to meet each particular design requirements. Manufacturer accepts no responsibility or liability for use of these or other construction details.

**FIGURE 18**

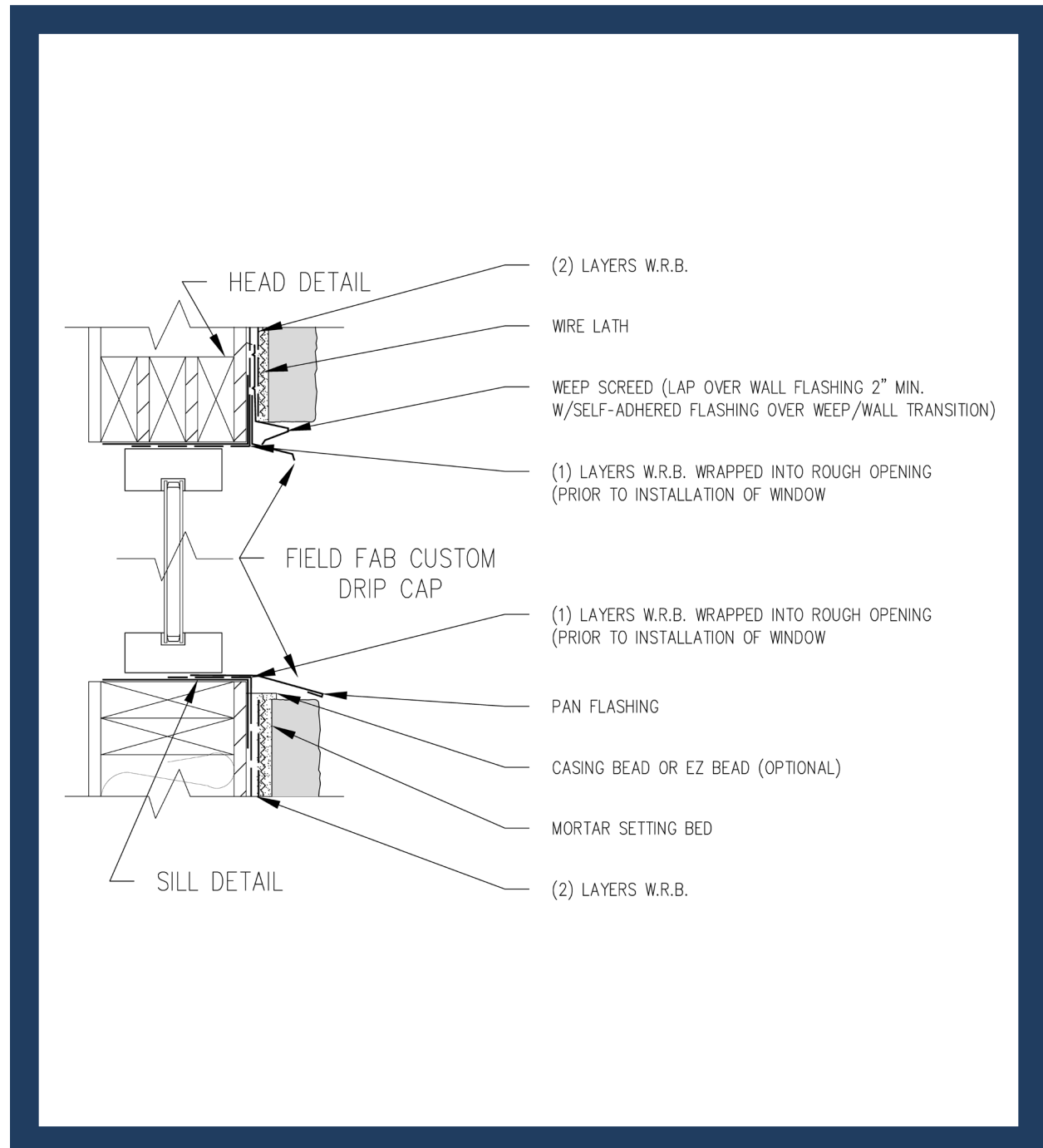
## COMMERCIAL WINDOW - JAMB W/ TRIM



Disclaimer: These construction details are provided to assist in the installation of Environmental Materials LLC product(s). These construction details will not necessarily apply to every design circumstance that you encounter and may require modification to meet each particular design requirements. Manufacturer accepts no responsibility or liability for use of these or other construction details.

**FIGURE 19**

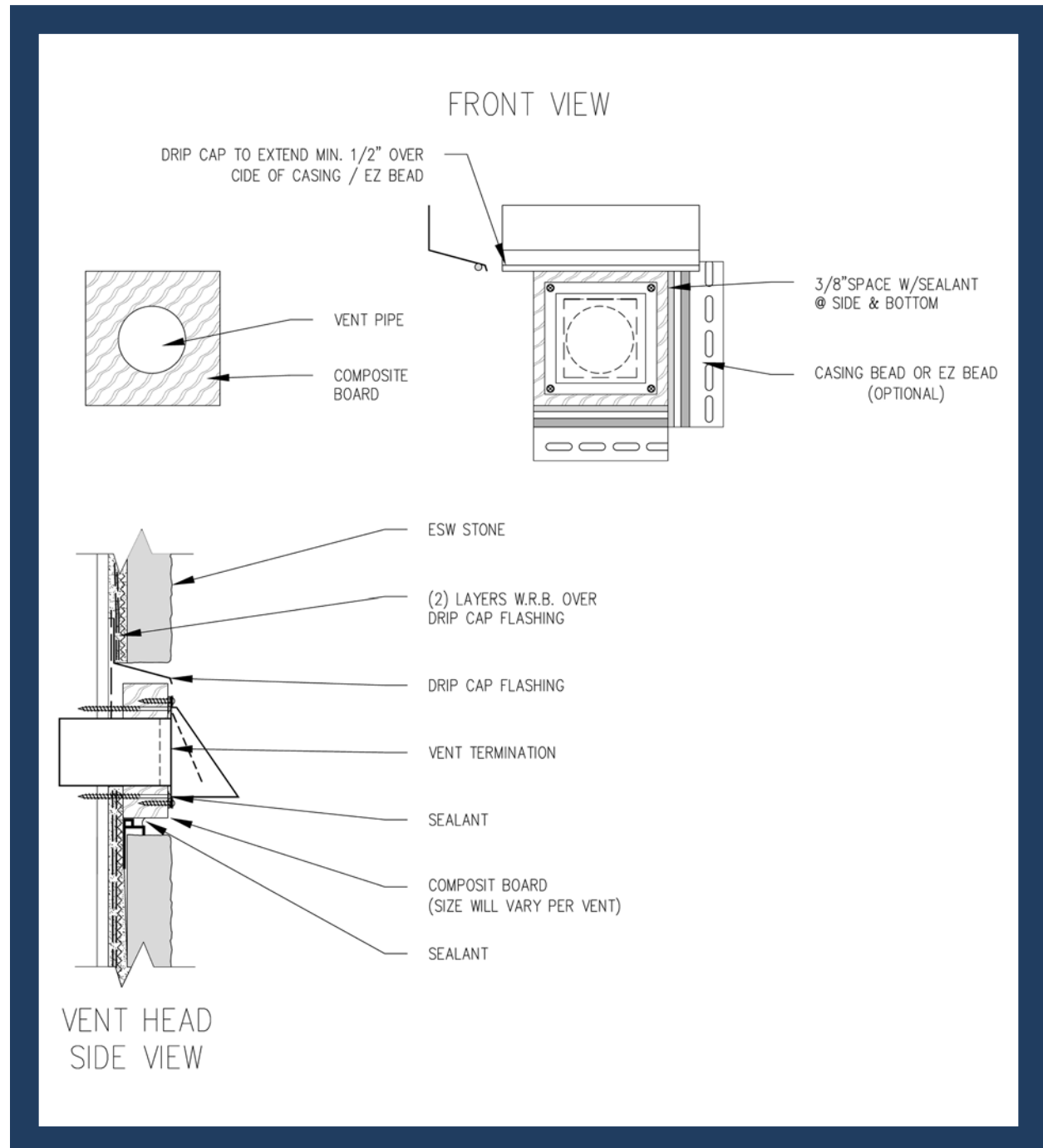
## COMMERCIAL WINDOW - HEADER AND SILL



Disclaimer: These construction details are provided to assist in the installation of Environmental Materials LLC product(s). These construction details will not necessarily apply to every design circumstance that you encounter and may require modification to meet each particular design requirements. Manufacturer accepts no responsibility or liability for use of these or other construction details.

**FIGURE 20**

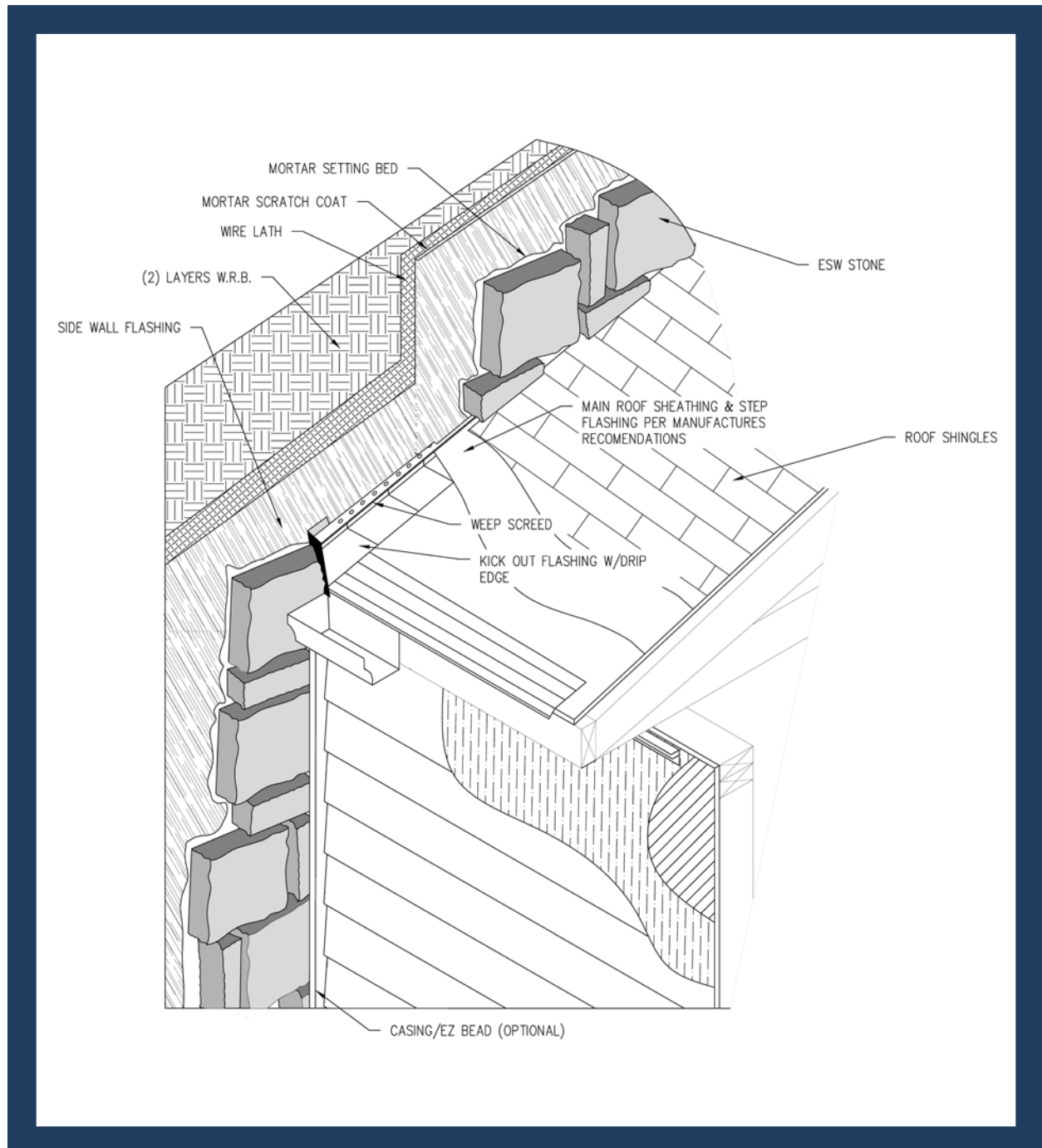
## DRYER VENT



Disclaimer: These construction details are provided to assist in the installation of Environmental Materials LLC product(s). These construction details will not necessarily apply to every design circumstance that you encounter and may require modification to meet each particular design requirements. Manufacturer accepts no responsibility or liability for use of these or other construction details.

**FIGURE 21**

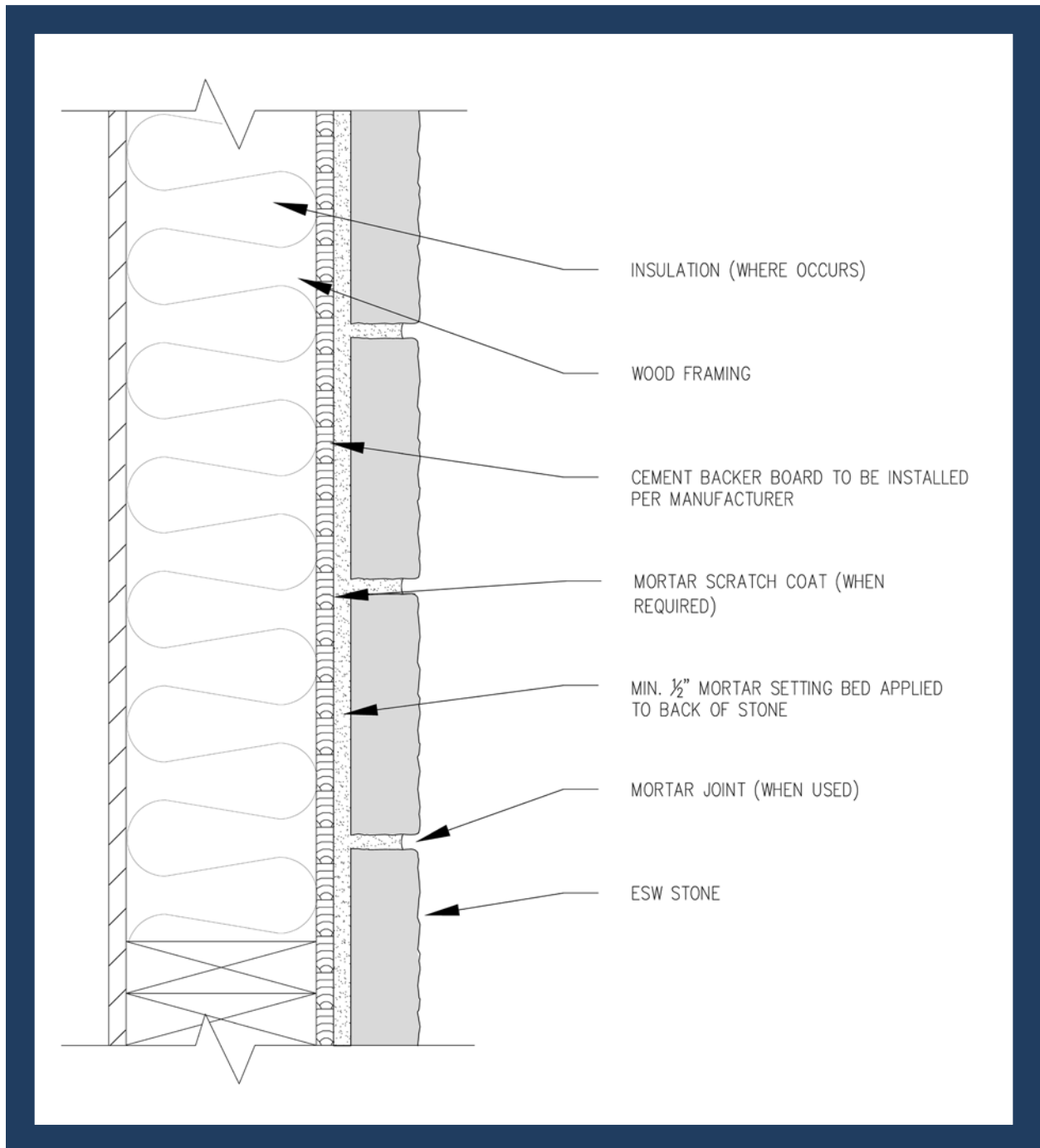
## ISOMETRIC VIEW: DIVERTER/KICK-OUT FLASHING DETAIL



Disclaimer: These construction details are provided to assist in the installation of Environmental Materials LLC product(s). These construction details will not necessarily apply to every design circumstance that you encounter and may require modification to meet each particular design requirements. Manufacturer accepts no responsibility or liability for use of these or other construction details.

**FIGURE 22**

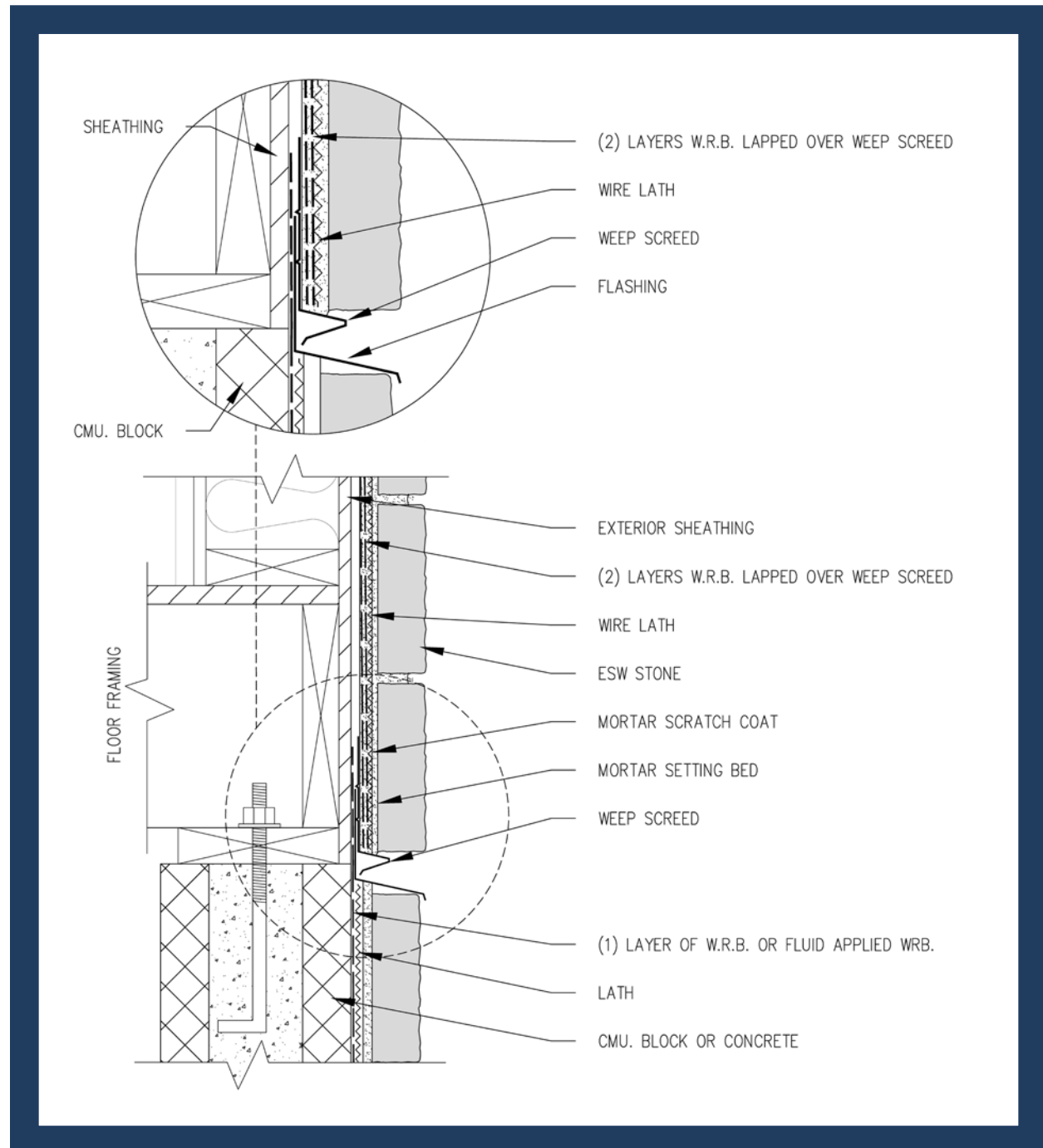
## INTERIOR OVER CEMENT BOARD



Disclaimer: These construction details are provided to assist in the installation of Environmental Materials LLC product(s). These construction details will not necessarily apply to every design circumstance that you encounter and may require modification to meet each particular design requirements. Manufacturer accepts no responsibility or liability for use of these or other construction details.

**FIGURE 23**

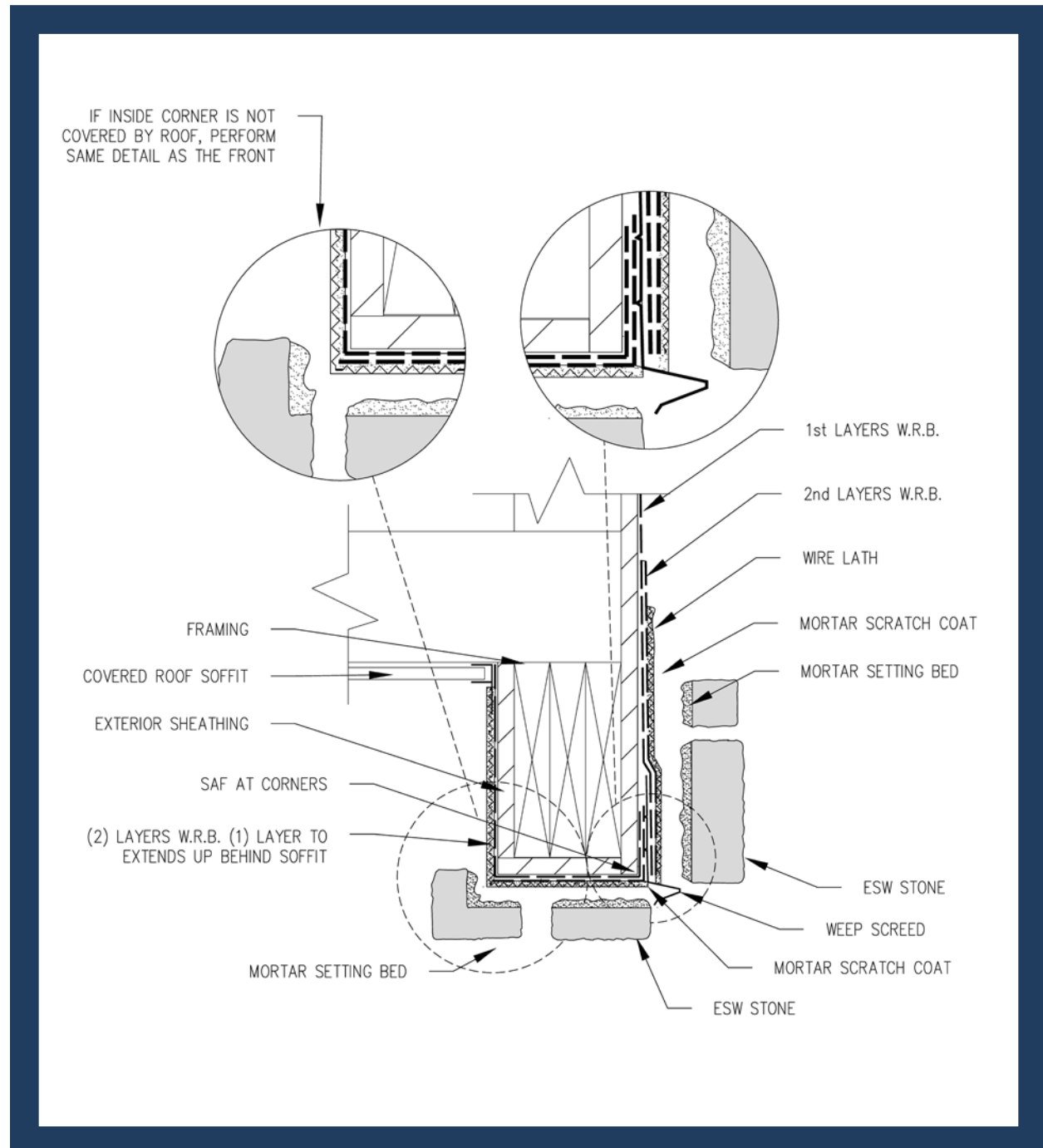
## MULTI STORY - MASONRY WALL TO FRAMED WALL CONTROL JOINT



Disclaimer: These construction details are provided to assist in the installation of Environmental Materials LLC product(s). These construction details will not necessarily apply to every design circumstance that you encounter and may require modification to meet each particular design requirements. Manufacturer accepts no responsibility or liability for use of these or other construction details.

**FIGURE 24**

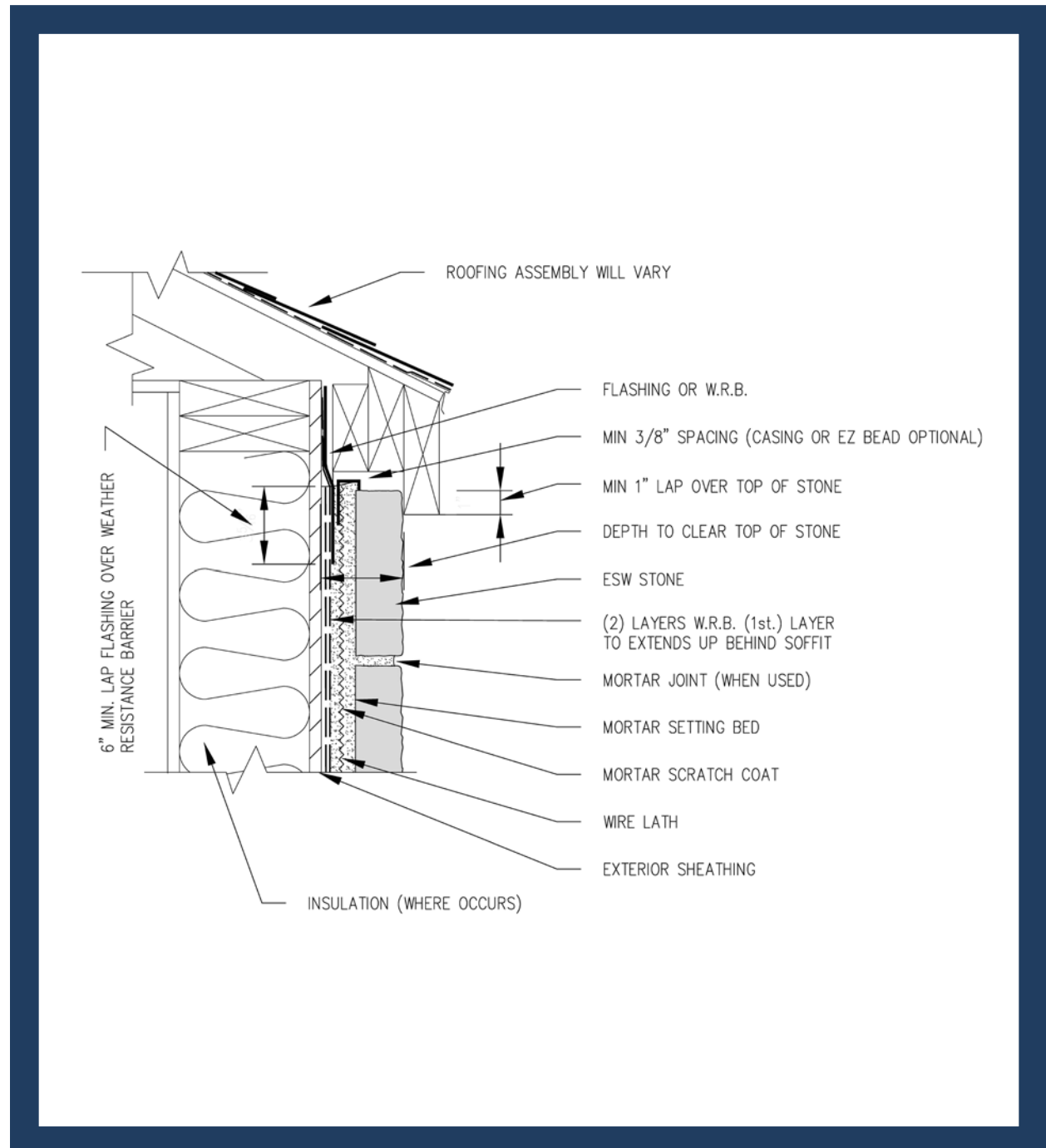
## STONE WRAP UNDER STRAIGHT OVERHANG



Disclaimer: These construction details are provided to assist in the installation of Environmental Materials LLC product(s). These construction details will not necessarily apply to every design circumstance that you encounter and may require modification to meet each particular design requirements. Manufacturer accepts no responsibility or liability for use of these or other construction details.

**FIGURE 25**

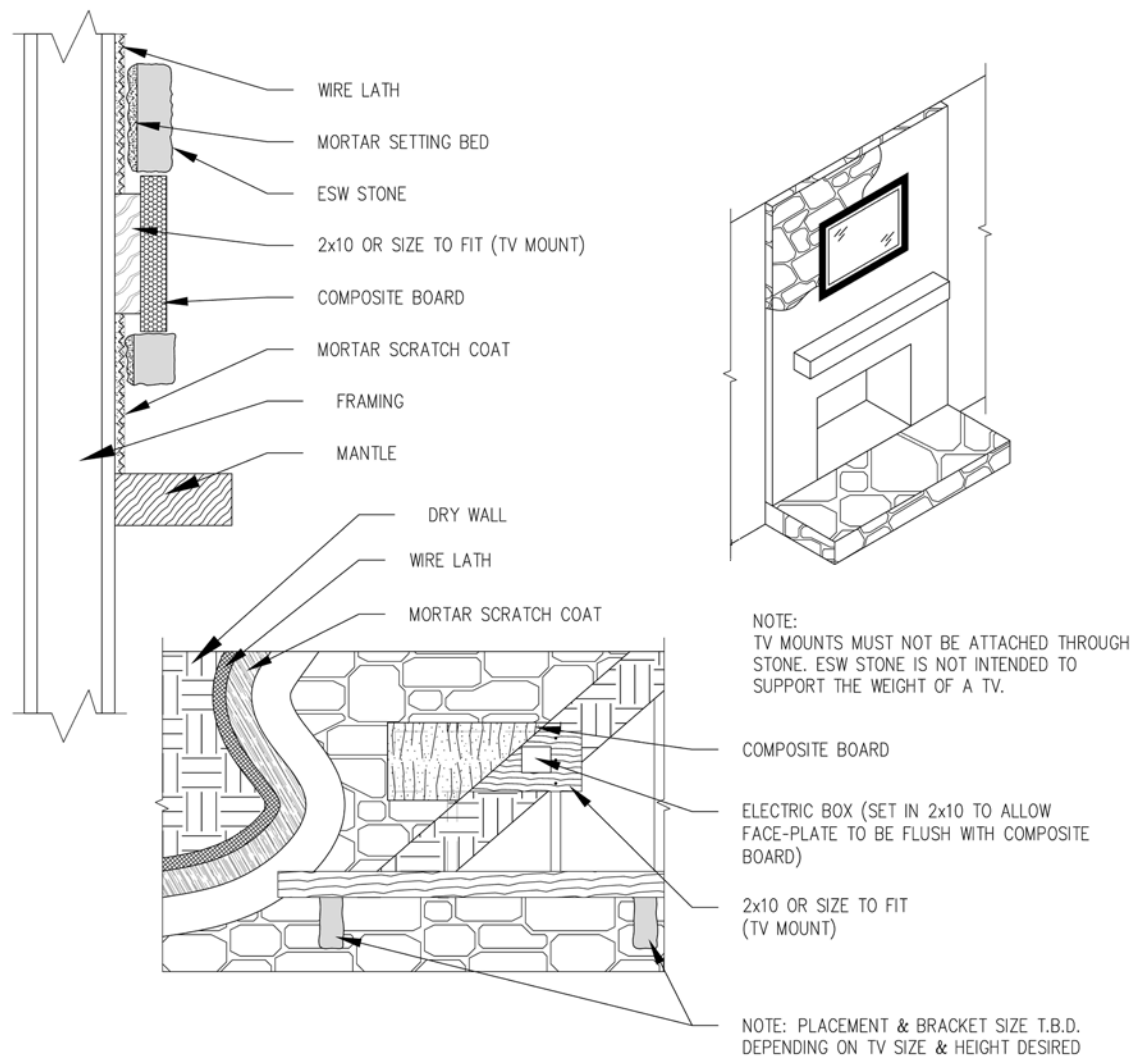
## STONE UNDER STRAIGHT OVERHANG



Disclaimer: These construction details are provided to assist in the installation of Environmental Materials LLC product(s). These construction details will not necessarily apply to every design circumstance that you encounter and may require modification to meet each particular design requirements. Manufacturer accepts no responsibility or liability for use of these or other construction details.

**FIGURE 26**

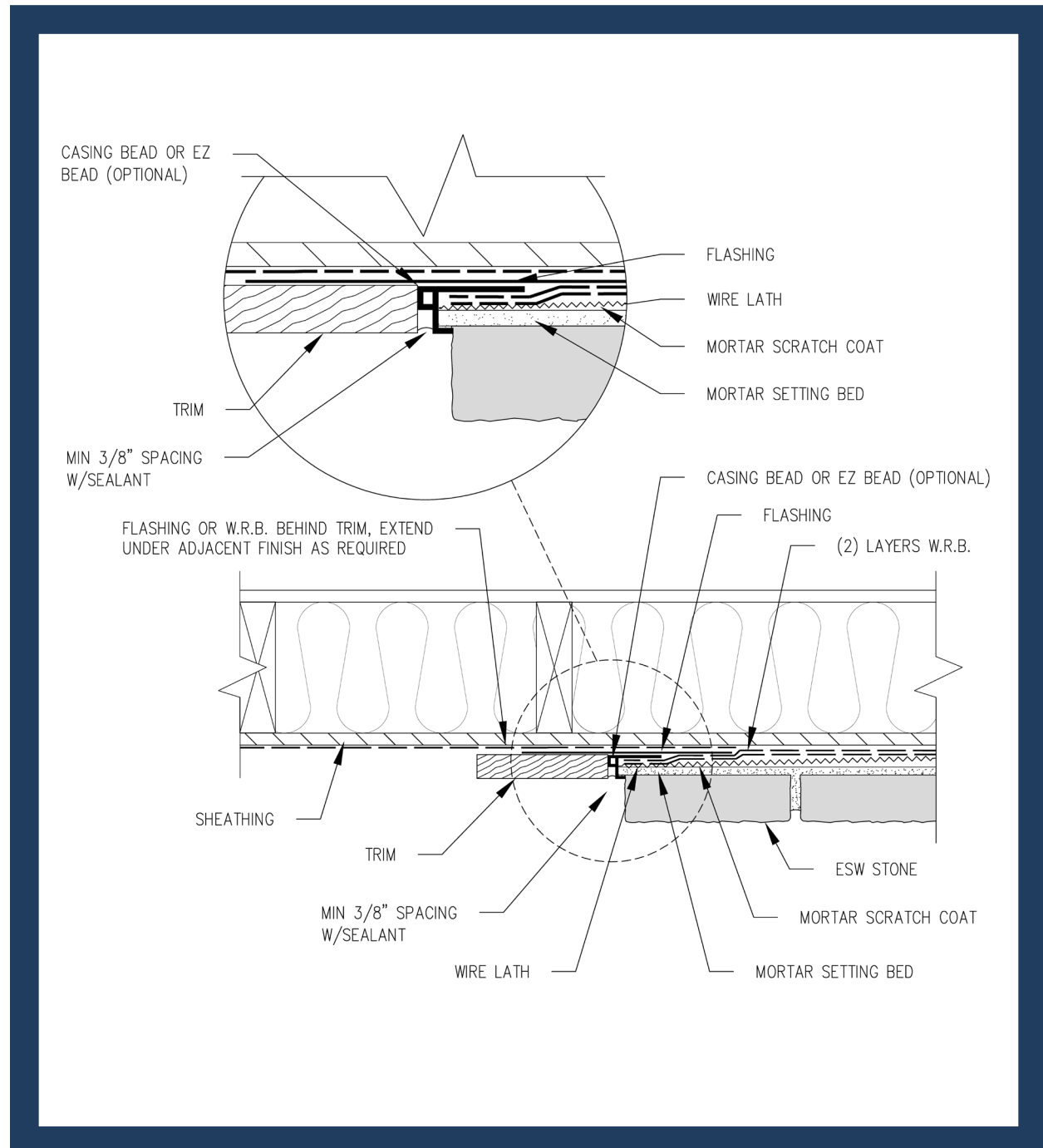
# FIREPLACE TV MOUNT



Disclaimer: These construction details are provided to assist in the installation of Environmental Materials LLC product(s). These construction details will not necessarily apply to every design circumstance that you encounter and may require modification to meet each particular design requirements. Manufacturer accepts no responsibility or liability for use of these or other construction details.

**FIGURE 27**

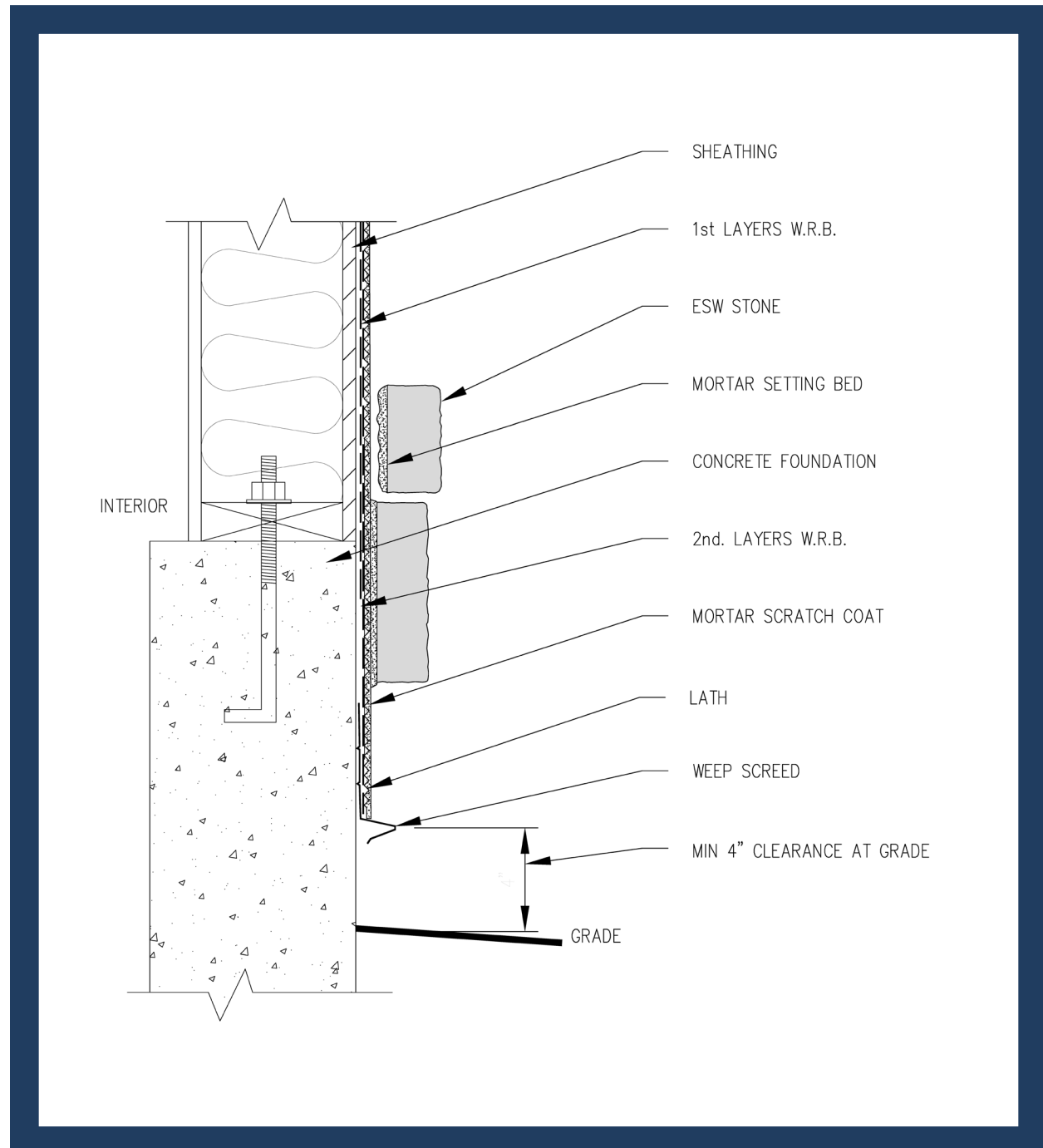
## VERTICAL TRANSITION @ DISSIMILAR MATERIAL



Disclaimer: These construction details are provided to assist in the installation of Environmental Materials LLC product(s). These construction details will not necessarily apply to every design circumstance that you encounter and may require modification to meet each particular design requirements. Manufacturer accepts no responsibility or liability for use of these or other construction details.

**FIGURE 28**

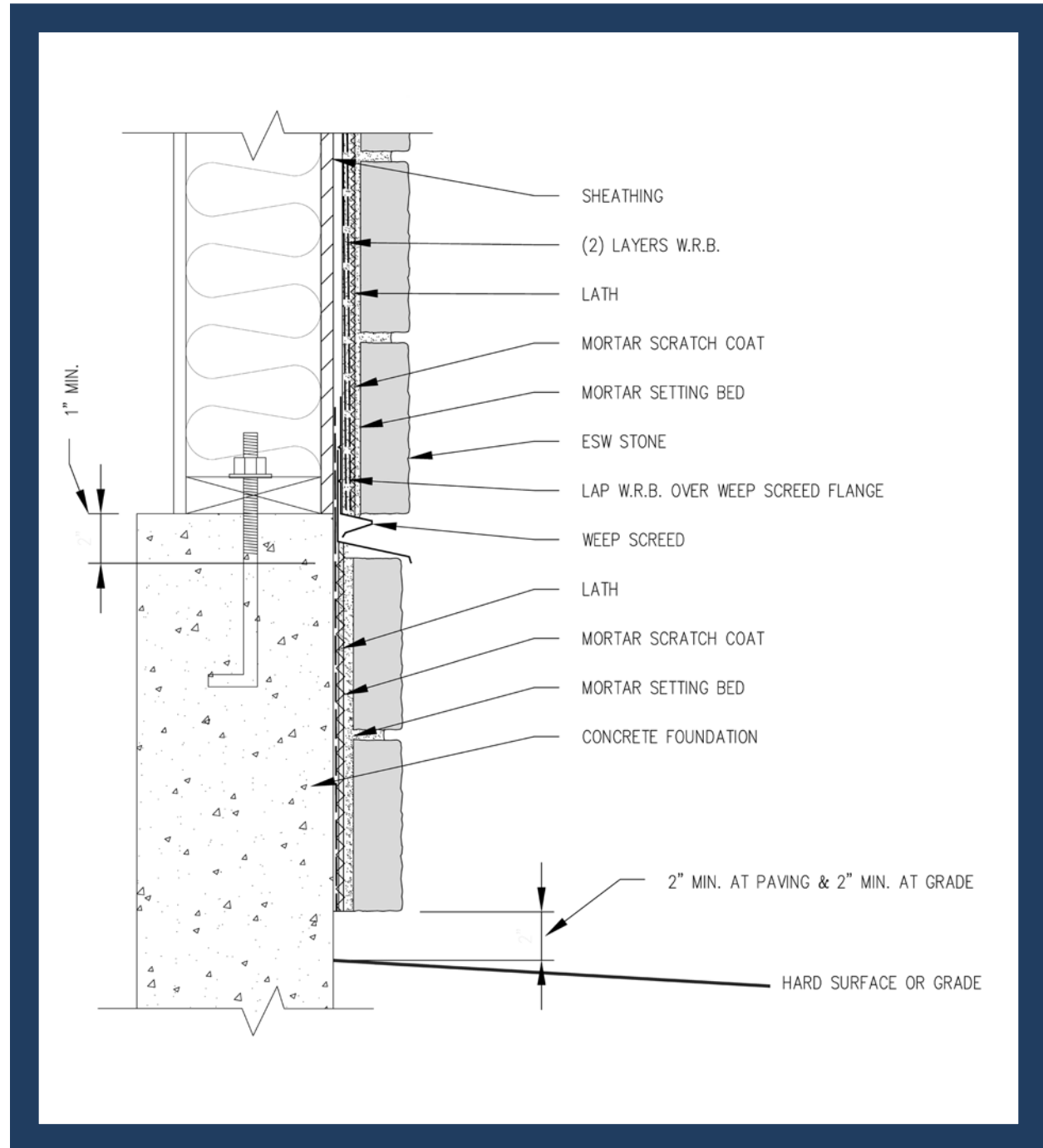
## STONE/FOUNDATION-CONTINUE OVER FOUNDATION, WEEP SCREED @ GRADE



Disclaimer: These construction details are provided to assist in the installation of Environmental Materials LLC product(s). These construction details will not necessarily apply to every design circumstance that you encounter and may require modification to meet each particular design requirements. Manufacturer accepts no responsibility or liability for use of these or other construction details.

**FIGURE 29**

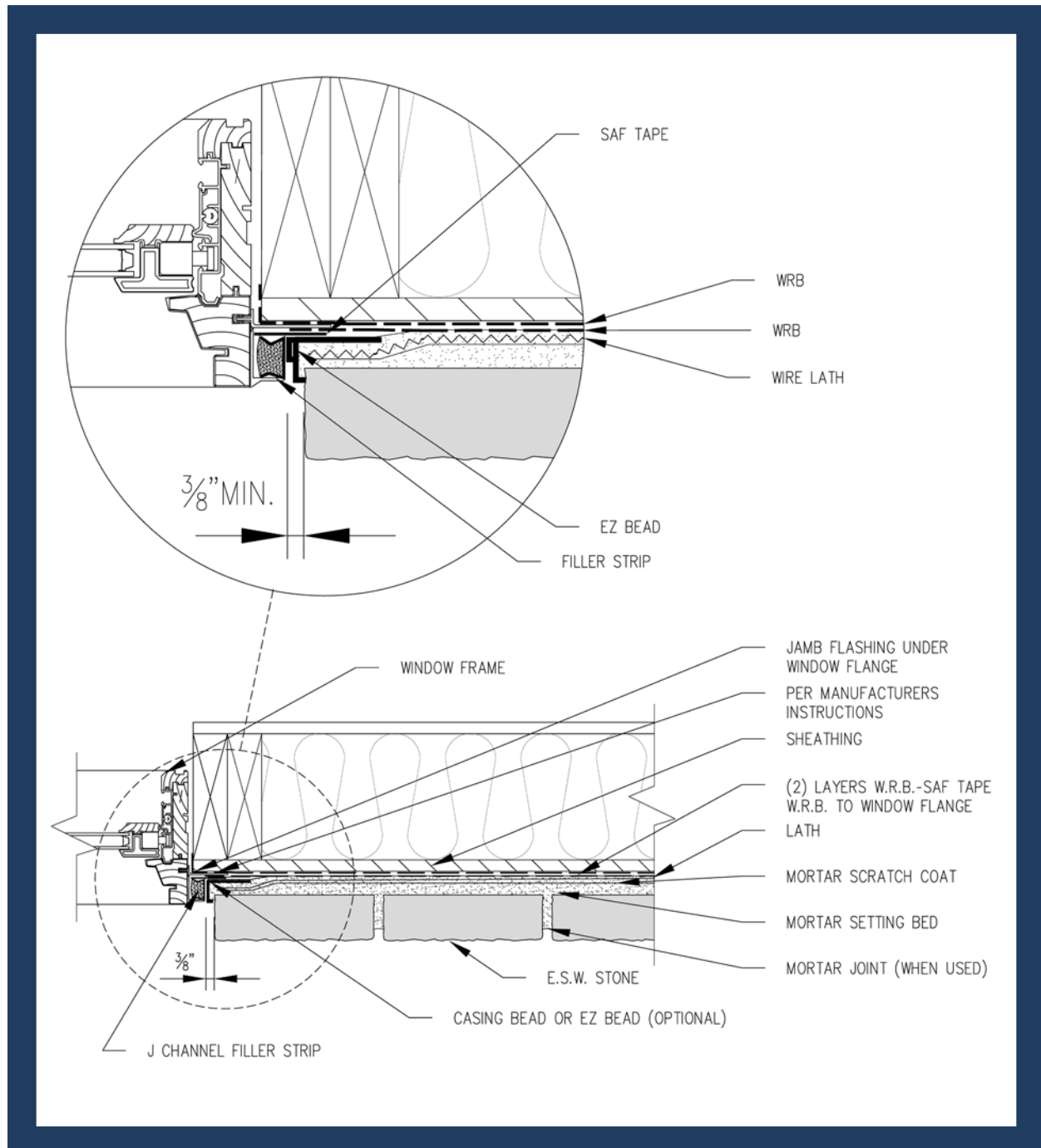
## STONE/FOUNDATION-CONTINUE OVER FOUNDATION, WEEP SCREED @ SILL PLATE



Disclaimer: These construction details are provided to assist in the installation of Environmental Materials LLC product(s). These construction details will not necessarily apply to every design circumstance that you encounter and may require modification to meet each particular design requirements. Manufacturer accepts no responsibility or liability for use of these or other construction details.

**FIGURE 30**

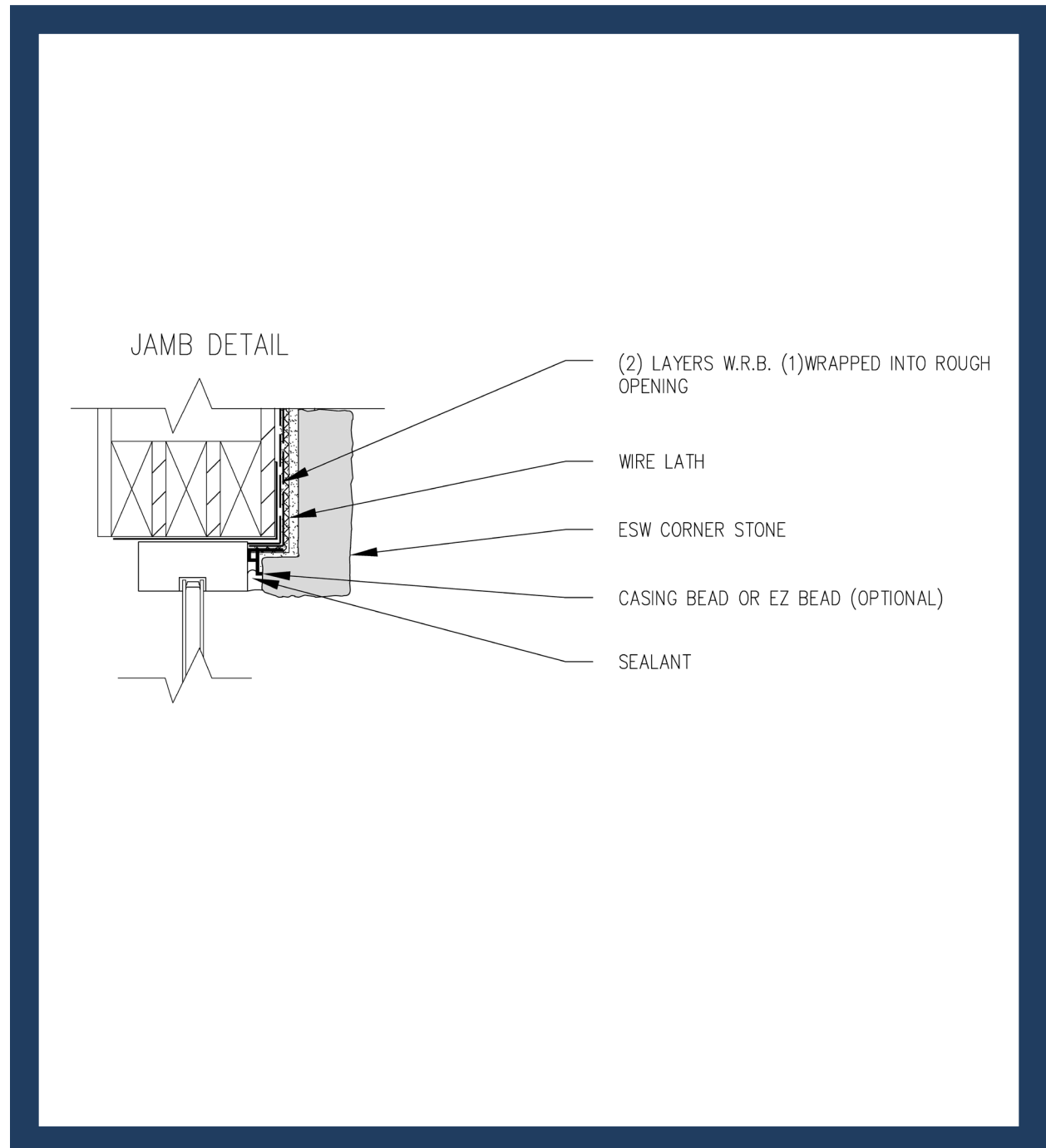
## WINDOW JAMB - INTEGRATED J-CHANNEL



Disclaimer: These construction details are provided to assist in the installation of Environmental Materials LLC product(s). These construction details will not necessarily apply to every design circumstance that you encounter and may require modification to meet each particular design requirements. Manufacturer accepts no responsibility or liability for use of these or other construction details.

**FIGURE 31**

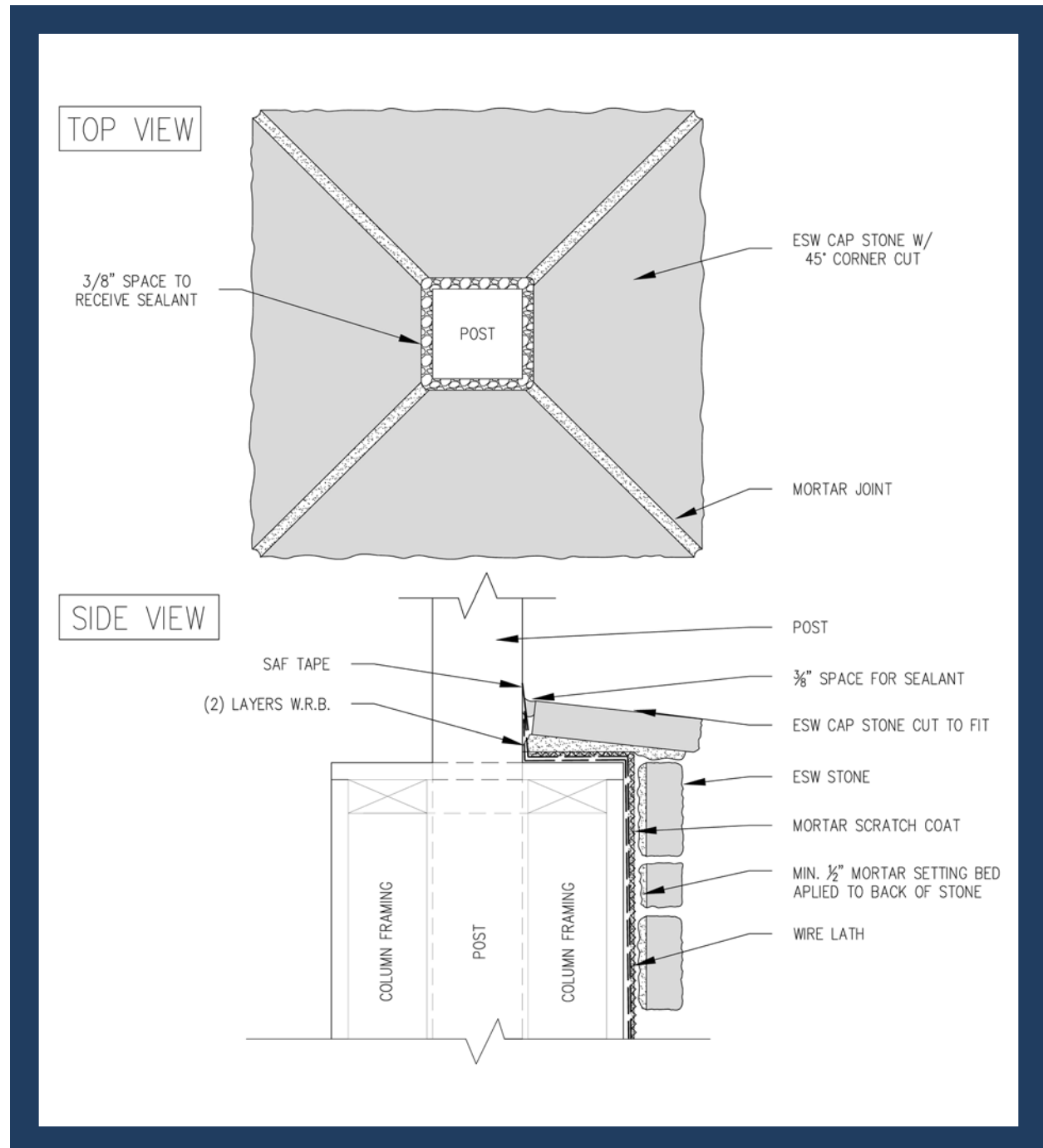
## COMMERCIAL WINDOW JAMB W/ CORNER STONE



Disclaimer: These construction details are provided to assist in the installation of Environmental Materials LLC product(s). These construction details will not necessarily apply to every design circumstance that you encounter and may require modification to meet each particular design requirements. Manufacturer accepts no responsibility or liability for use of these or other construction details.

**FIGURE 32**

## COLUMN TOP W/ SUPPORT POST



*Disclaimer: These construction details are provided to assist in the installation of Environmental Materials LLC product(s). These construction details will not necessarily apply to every design circumstance that you encounter and may require modification to meet each particular design requirements. Manufacturer accepts no responsibility or liability for use of these or other construction details.*