

stone guide MIDWEST

Beautiful Stone Veneer, Installed.



651-227-8770 | 5935 410th Street | North Branch, MN 55056

STONWORKS®

LEDGESTONE



Andes Summit Ledgestone MN



Bucks County Ledgestone MN

MOUNTAIN LEDGESTONE



Black Mountain Ledgestone MN

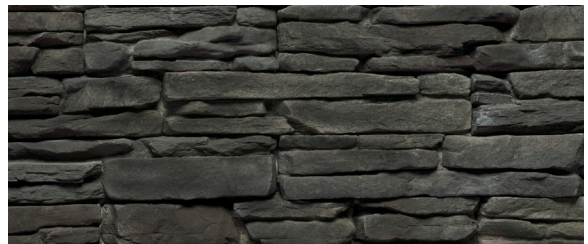


Slate Mountain Ledgestone MN

RUSTIC LEDGESTONE

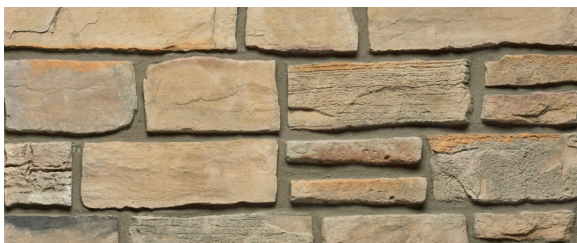


Canyon Rustic Ledgestone MN



Smoke Rustic Ledgestone MN

RUSTIC LEDGESTONE



Mississippi Bluff Weatheredge MN



St. Croix Grey Weatheredge

SHADOW LEDGESTONE



Andes Summit Shadow Ledge stone MN



Bellweather Shadow Ledge stone MN



Black Rundle Shadow Ledge stone MN



Bucks County Shadow Ledge stone MN



Elk Horn Shadow Ledge stone MN



Ironwood Shadow Ledge stone MN



Northern Peak Shadow Ledge stone MN



Slate Shadow Ledge stone MN



Smokey Mountain Shadow Ledge stone MN

TUSCAN LEDGESTONE



Andes Summit Tuscan Ledgestone MN



Aspen Tuscan Ledgestone MN



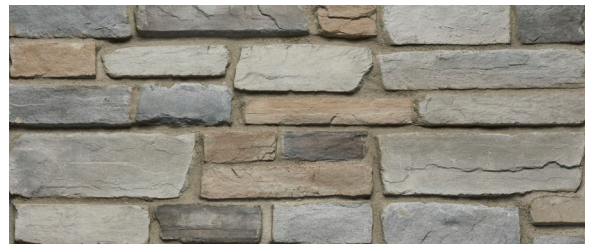
Black Rundle Tuscan Ledgestone MN



Bucks County Tuscan Ledgestone MN



Chardonnay Tuscan Ledgestone MN



Ironwood Tuscan Ledgestone MN



Lantana Tuscan Ledgestone MN



Nickel Creek Tuscan Ledgestone MN



Slate Tuscan Ledgestone MN



Willow Peak Tuscan Ledgestone MN

PROSTACK LITE



Black Creek Prostack Lite MN



Black Prostack Lite MN



Black Rundle Prostack Lite MN



Osceola Prostack Light MN



Platinum Prostack Lite MN



Slate Prostack Lite MN

CUT STONE



Chilton Country Squire Cut Stone MN



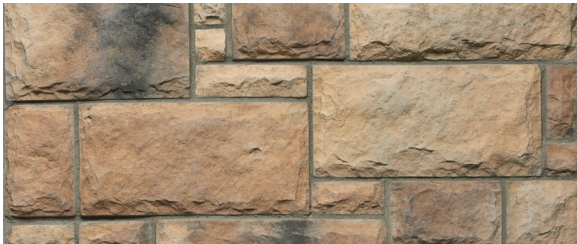
Fond Du Lac Country Squire Cut Stone MN



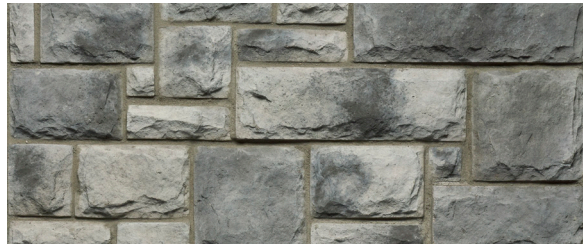
San Francisco Country Squire Cut Stone MN



Smoke Country Squire Cut Stone MN



Sandstone Castle Rock Cut Stone MN



Slate Castle Rock Cut Stone MN



Winona Country Squire Cut Stone MN

Note: Color swatches are for reference only. Physical samples should always be ordered and referenced to ensure the accuracy of the colorway.

RUBBLE



Andes Summit Rubble MN



Bucks County Rubble MN



Slate Rubble MN

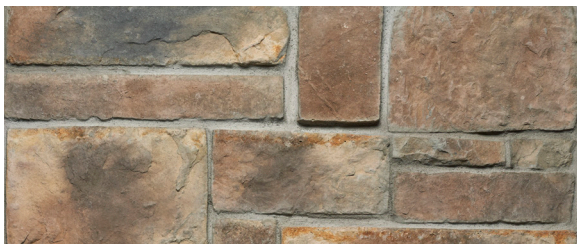
HACKETT



Andes Summit Hackett MN



Black Oak Hackett MN

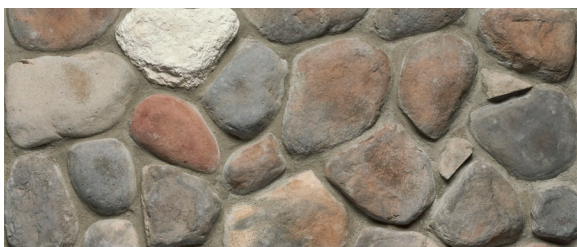


Ozark Hackett MN



Stone Mountain Hackett MN

FIELDSTONE



Arrowhead Fieldstone MN



Great Lakes Splitface Fieldstone MN

STEPP STONE



Andes Summit Stepp Stone MN



Black Creek Stepp Stone MN



Black Rundle Stepp Stone MN

PRAIRIE STONE



Osceola Prairie Stone MN

*This selection guide features a sampling of our most popular offerings.
Contact your StoneWorks sales representative for even more stone veneer colors and collections.*

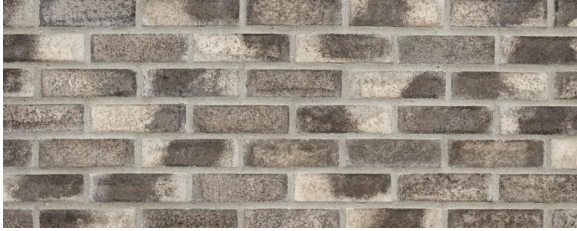
THIN BRICK



Albescent Clean Brick MN



Brandywine Clean Brick MN



Cannon Clean Brick MN



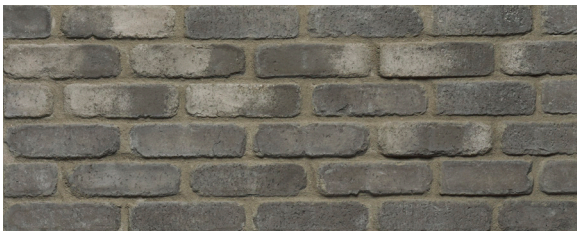
Charcoal Clean Brick MN



Osceola Clean Brick MN



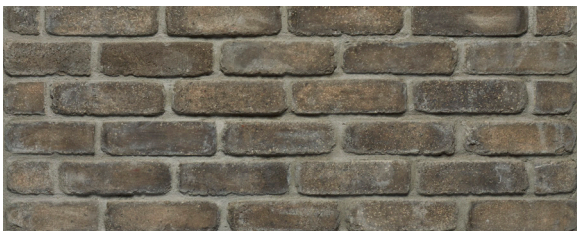
Bell Tower Tumbled Brick MN



Cannon Tumbled Brick MN



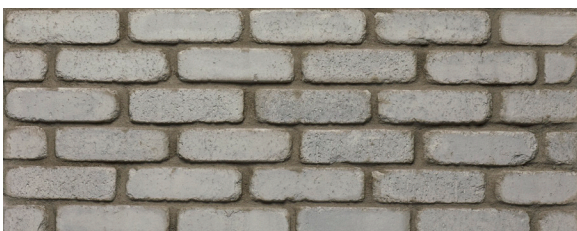
Charcoal Tumbled Brick MN



Eastern Pine Tumbled Brick MN



Grey Drift Tumbled Brick MN



Highland Grey Tumbled Brick MN

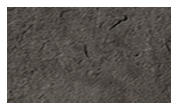


Osceola Tumbled Brick MN

ACCESSORIES

More Accessories Available

AVAILABLE COLORS *(Osceola available by special order)*



Black



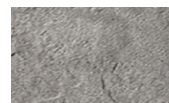
Buff



Fond du Lac



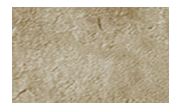
Light Grey



Dark Grey



Kodiak



Marsh



HEARTHTHS

18" x 20" standard size
Rock edge, natural top



SILLS

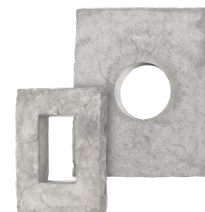
24"L x 3"D x 2"H

LIGHT COVERS

Split edge natural top

Light Box (center):
9.5"W x 15"H x 2"D

Outlet Box (single outlet):
6"W x 8"H x 2"D



Note: not all accessories are available in all colors

STONE VENEER + INSTALLATION

StoneWorks is builders' one source solution for manufactured stone veneer, installed. From pre-construction and product selection to delivery and installation, StoneWorks turnkey philosophy ensures that builders receive the total stone experience with only one point of contact from start to finish.

That means we also take care of all the steps in between. Trade professionals benefit from a vast product offering, fully coordinated installation services, a dedicated project manager on site, field support to improve communication and tested safety programs to reduce risks. Now that's turnkey.

50
YEAR
LIMITED
PRODUCT
WARRANTY



Because StoneWorks manufactured stone veneer replicates natural stone, inconsistencies in color and texture can be expected. Every effort has been made to ensure the stone colors on our printed and online materials are as close to the actual stone veneer as possible. However, photography, printing, and viewing conditions may alter perception of color. Consult your sales representative for product samples. StoneWorks reserves the right to alter, modify, or delete items from time to time without notice. While every reasonable effort has been done to ensure the accuracy of the photographs, the photos are intended only as a simple, general illustration of product available and should not be considered as a definitive guide or representation of the actual product. Contact StoneWorks for hard samples, spec clarifications and/or product updates.

estoneworks.com | 651-277-8770



STONeworks®



© 2023 Environmental Materials, LLC.
Part of the Cornerstone Building Brands family.

Lit Item #ESW-407 11/2023
Iris #: 8103235161112

